

CD3E Rabbit mAb

Catalog No.: A23504 **Recombinant**

Basic Information

Observed MW

Refer to figures

Calculated MW

23kDa

Category

Primary antibody

Applications

ELISA, WB, IHC-P, FC

Cross-Reactivity

Human

CloneNo number

ARC0327

Background

The protein encoded by this gene is the CD3-epsilon polypeptide, which together with CD3-gamma, -delta and -zeta, and the T-cell receptor alpha/beta and gamma/delta heterodimers, forms the T-cell receptor-CD3 complex. This complex plays an important role in coupling antigen recognition to several intracellular signal-transduction pathways. The genes encoding the epsilon, gamma and delta polypeptides are located in the same cluster on chromosome 11. The epsilon polypeptide plays an essential role in T-cell development. Defects in this gene cause immunodeficiency. This gene has also been linked to a susceptibility to type I diabetes in women.

Recommended Dilutions

WB	1:500 - 1:1000
IHC-P	1:50 - 1:200
FC	1:50 - 1:200

Immunogen Information

Gene ID

916

Swiss Prot

P07766

Immunogen

A synthetic peptide corresponding to a sequence within amino acids 100-200 of human CD3E (NP_000724.1).

Synonyms

T3E; TCRE; IMD18; CD3epsilon; CD3E

Contact

☎ | 400-999-6126

✉ | cn.market@abclonal.com.cn

🌐 | www.abclonal.com.cn

Product Information

Source

Rabbit

Isotype

IgG

Purification

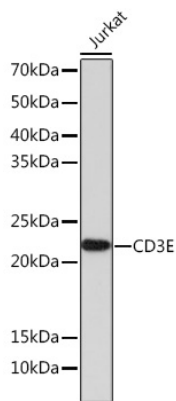
Affinity purification

Storage

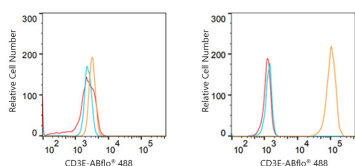
Store at -20°C. Avoid freeze / thaw cycles.

Buffer: PBS with 0.05% proclin300, 0.05% BSA, 50% glycerol, pH7.3.

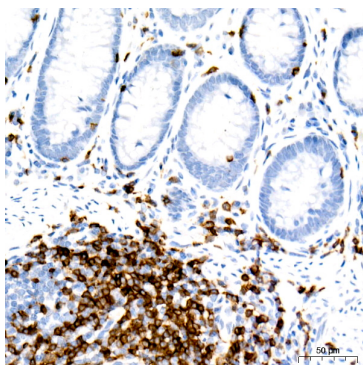
Validation Data



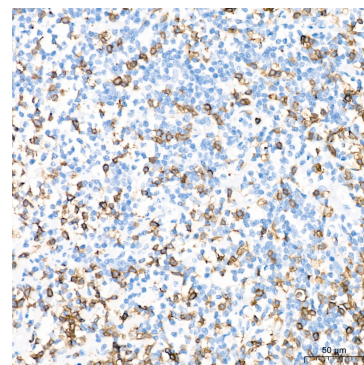
Western blot analysis of lysates from Jurkat cells, using CD3E Rabbit mAb (A23504) at 1:1000 dilution. Secondary antibody: HRP Goat Anti-Rabbit IgG (H+L) (AS014) at 1:10000 dilution. Lysates/proteins: 25µg per lane. Blocking buffer: 3% nonfat dry milk in TBST. Detection: ECL Enhanced Kit (RM00021). Exposure time: 3min.



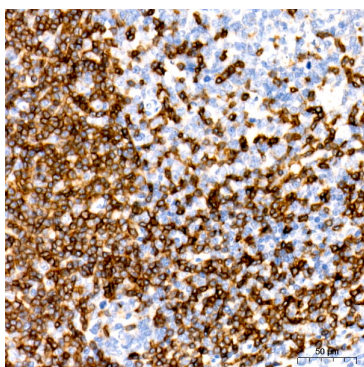
Flow cytometry: 1×10^6 Raji cells (negative control, left) and Jurkat cells (right) were surface-stained with CD3E Rabbit mAb (A23504, 2 µg/mL, orange line) or ABflo® 488 Rabbit IgG isotype control (A22069, 2 µg/mL, blue line), followed by Alexa Fluor® 488 conjugated goat anti-rabbit pAb (1:200 dilution) staining. Non-fluorescently stained cells were used as blank control (red line).



Immunohistochemistry analysis of CD3E in paraffin-embedded human colon using CD3E Rabbit mAb (A23504) at dilution of 1:100 (40x lens). Perform high pressure antigen retrieval with 10 mM citrate buffer pH 6.0 before commencing with IHC staining protocol.



Immunohistochemistry analysis of CD3E in paraffin-embedded Human Follicular lymphoma using CD3E Rabbit mAb (A23504) at dilution of 1:100 (40x lens). Perform high pressure antigen retrieval with 10 mM citrate buffer pH 6.0 before commencing with IHC staining protocol.



Immunohistochemistry analysis of CD3E in paraffin-embedded human tonsil using CD3E Rabbit mAb (A23504) at dilution of 1:100 (40x lens). Perform high pressure antigen retrieval with 10 mM citrate buffer pH 6.0 before commencing with IHC staining protocol.