

Histone H3 Rabbit pAb

Catalog No.: A2352 **9 Publications**

Basic Information

Observed MW

17 kDa

Calculated MW

15 kDa

Category

Primary antibody

Applications

WB, IHC-P, IP, ELISA, ChIP

Cross-Reactivity

Human, Mouse, Rat, Other (Wide Range Predicted)

Background

Histones are basic nuclear proteins that are responsible for the nucleosome structure of the chromosomal fiber in eukaryotes. Nucleosomes consist of approximately 146 bp of DNA wrapped around a histone octamer composed of pairs of each of the four core histones (H2A, H2B, H3, and H4). The chromatin fiber is further compacted through the interaction of a linker histone, H1, with the DNA between the nucleosomes to form higher order chromatin structures. This gene is intronless and encodes a replication-dependent histone that is a member of the histone H3 family. Transcripts from this gene lack polyA tails; instead, they contain a palindromic termination element. This gene is located separately from the other H3 genes that are in the histone gene cluster on chromosome 6p22-p21.3.

Recommended Dilutions

WB 1:2000 - 1:10000

IHC-P 1:50 - 1:200

IP 0.5µg-4µg antibody for
200µg-400µg extracts of
whole cells

ELISA Recommended starting
concentration is 1 µg/mL.
Please optimize the
concentration based on
your specific assay
requirements.

ChIP 5µg antibody for
5µg-10µg of Chromatin

Contact

☎ | 400-999-6126

✉ | cn.market@abclonal.com.cn

Immunogen Information

Gene ID

8290/8350

Swiss Prot

Q16695/P68431

Immunogen

Synthetic peptide. This information is considered to be commercially sensitive.

Synonyms

H3t; H3.4; H3/g; H3FT; H3C16; HIST3H3; Histone H3

Product Information

Source

Rabbit

Isotype

IgG

Purification

Affinity purification

Storage

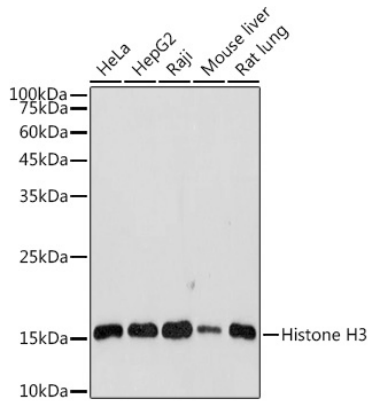
Store at -20°C. Avoid freeze / thaw cycles.

Buffer: PBS containing 50% glycerol, preserved with proclin300 or sodium azide (as specified on the Certificate of Analysis), pH 7.3.

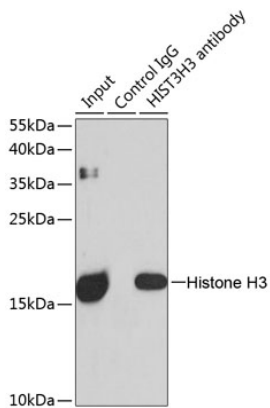


| www.abclonal.com.cn

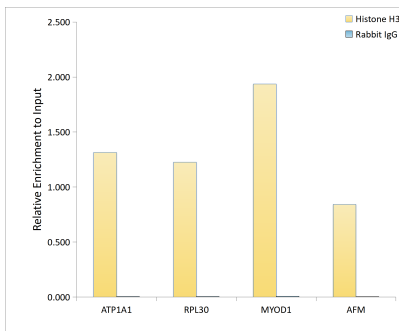
Validation Data



Western blot analysis of various lysates using Histone H3 Rabbit pAb (A2352) at 1:10000 dilution. Secondary antibody: HRP-conjugated Goat anti-Rabbit IgG (H+L) (AS014) at 1:10000 dilution. Lysates/proteins: 25µg per lane. Blocking buffer: 3% nonfat dry milk in TBST. Detection: ECL Basic Kit (RM00020). Exposure time: 60s.

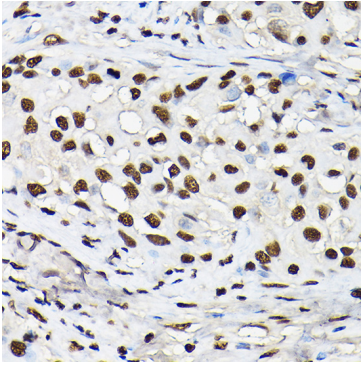


Immunoprecipitation analysis of 150 µg extracts of MCF7 cells using 3 µg Histone H3 antibody (A2352). Western blot was performed from the immunoprecipitate using Histone H3 antibody (A2352) at a dilution of 1:500.

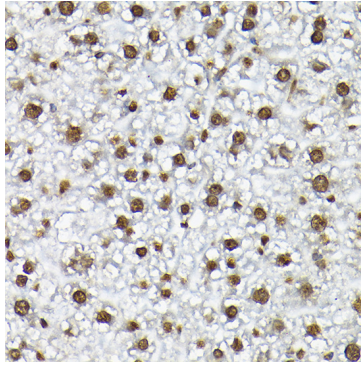


Chromatin immunoprecipitation analysis of extracts of HeLa cells, using Histone H3 antibody (A2352) and rabbit IgG. The amount of immunoprecipitated DNA was checked by quantitative PCR. Histogram was constructed by the ratios of the immunoprecipitated DNA to the input.

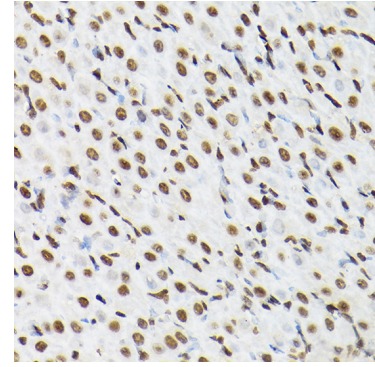
Validation Data



Immunohistochemistry analysis of paraffin-embedded Human breast cancer using Histone H3 Rabbit pAb (A2352) at dilution of 1:20 (40x lens). High pressure antigen retrieval performed with 0.01M Citrate buffer (pH 6.0) prior to IHC staining.



Immunohistochemistry analysis of paraffin-embedded Mouse liver using Histone H3 Rabbit pAb (A2352) at dilution of 1:20 (40x lens). High pressure antigen retrieval performed with 0.01M Citrate buffer (pH 6.0) prior to IHC staining.



Immunohistochemistry analysis of paraffin-embedded Rat ovary using Histone H3 Rabbit pAb (A2352) at dilution of 1:20 (40x lens). High pressure antigen retrieval performed with 0.01M Citrate buffer (pH 6.0) prior to IHC staining.