

[KD Validated] Bak Rabbit mAb

Catalog No.: A23523 **Recombinant**

Basic Information

Observed MW

23kDa/

Calculated MW

23kDa

Category

Primary antibody

Applications

ELISA, WB, IHC-P

Cross-Reactivity

Human, Mouse

CloneNo number

ARC54625

Background

The protein encoded by this gene belongs to the BCL2 protein family. BCL2 family members form oligomers or heterodimers and act as anti- or pro-apoptotic regulators that are involved in a wide variety of cellular activities. This protein localizes to mitochondria, and functions to induce apoptosis. It interacts with and accelerates the opening of the mitochondrial voltage-dependent anion channel, which leads to a loss in membrane potential and the release of cytochrome c. This protein also interacts with the tumor suppressor P53 after exposure to cell stress.

Recommended Dilutions

WB	1:1000 - 1:5000
IHC-P	1:50 - 1:200

Immunogen Information

Gene ID

578

Swiss Prot

Q16611

Immunogen

Recombinant fusion protein containing a sequence corresponding to amino acids 11-82 of human Bak (NP_001179.1).

Synonyms

BAK; CDN1; BCL2L7; BAK-LIKE; Bak

Contact

 | 400-999-6126

 | cn.market@abclonal.com.cn

 | www.abclonal.com.cn

Product Information

Source

Rabbit

Isotype

IgG

Purification

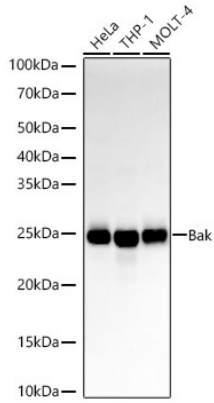
Affinity purification

Storage

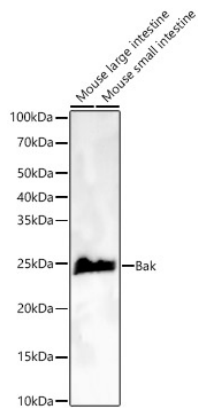
Store at -20°C. Avoid freeze / thaw cycles.

Buffer: PBS with 0.05% proclin300, 0.05% BSA, 50% glycerol, pH7.3.

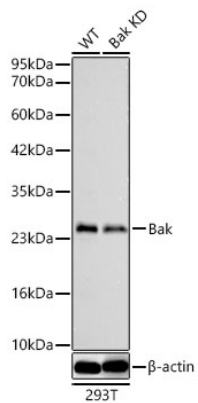
Validation Data



Western blot analysis of various lysates, using [KD Validated] Bak Rabbit mAb (A23523) at 1:2000 dilution.
Secondary antibody: HRP Goat Anti-Rabbit IgG (H+L) (AS014) at 1:10000 dilution.
Lysates/proteins: 25µg per lane.
Blocking buffer: 3% nonfat dry milk in TBST.
Detection: ECL Basic Kit (RM00020).
Exposure time: 10s.

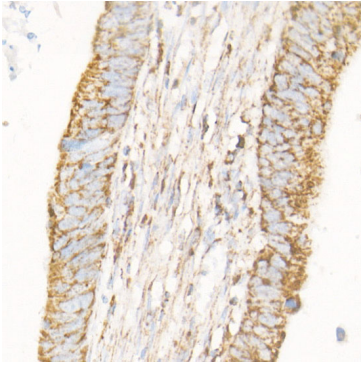


Western blot analysis of various lysates, using [KD Validated] Bak Rabbit mAb (A23523) at 1:2000 dilution.
Secondary antibody: HRP Goat Anti-Rabbit IgG (H+L) (AS014) at 1:10000 dilution.
Lysates/proteins: 25µg per lane.
Blocking buffer: 3% nonfat dry milk in TBST.
Detection: ECL Basic Kit (RM00020).
Exposure time: 10s.

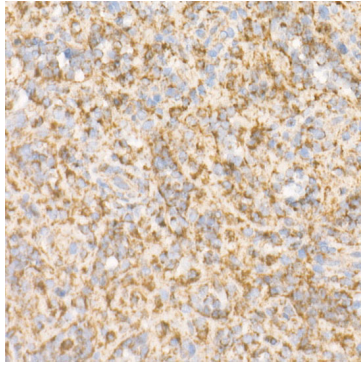


Western blot analysis of lysates from wild type (WT) and Bak knockdown (KD) 293T cells using [KD Validated] Bak Rabbit mAb (A23523) at 1:1000 dilution incubated overnight at 4°C.
Secondary antibody: HRP-conjugated Goat anti-Rabbit IgG (H+L) (AS014) at 1:10000 dilution.
Lysates/proteins: 25 µg per lane.
Blocking buffer: 3% nonfat dry milk in TBST.
Detection: ECL Basic Kit (RM00020).
Exposure time: 20s.

Validation Data



Immunohistochemistry analysis of paraffin-embedded human colon carcinoma using [KD Validated] Bak Rabbit mAb (A23523) at dilution of 1:100(40x lens).Perform high pressure antigen retrieval with 10 mM citrate buffer pH 6.0 before commencing with IHC staining protocol.



Immunohistochemistry analysis of paraffin-embedded human spleen using [KD Validated] Bak Rabbit mAb (A23523) at dilution of 1:100(40x lens).Perform high pressure antigen retrieval with 10 mM citrate buffer pH 6.0 before commencing with IHC staining protocol.