

# CD2 Rabbit mAb

Catalog No.: A23527 **Recombinant**

## Basic Information

### Observed MW

65kDa

### Calculated MW

38kDa

### Category

Primary antibody

### Applications

ELISA,WB,FC

### Cross-Reactivity

Mouse

### CloneNo number

ARC60614

## Background

Enables identical protein binding activity. Predicted to be involved in T cell activation; heterotypic cell-cell adhesion; and positive regulation of cytokine production. Located in several cellular components, including cell-cell junction; cytoplasmic side of plasma membrane; and external side of plasma membrane. Is anchored component of plasma membrane. Is expressed in several structures, including alimentary system; central nervous system; genitourinary system; hemolymphoid system gland; and liver and biliary system. Orthologous to human CD2 (CD2 molecule).

## Recommended Dilutions

<b>WB</b>	1:500 - 1:1000
<b>FC</b>	1:500 - 1:1000

## Immunogen Information

### Gene ID

12481

### Swiss Prot

P08920

### Immunogen

Recombinant fusion protein containing a sequence corresponding to amino acids 23-203 of mouse CD2 (NP\_038514.1).

### Synonyms

Ly37; LFA-2; Ly-37; CD2

## Contact

☎ | 400-999-6126

✉ | [cn.market@abclonal.com.cn](mailto:cn.market@abclonal.com.cn)

🌐 | [www.abclonal.com.cn](http://www.abclonal.com.cn)

## Product Information

### Source

Rabbit

### Isotype

IgG

### Purification

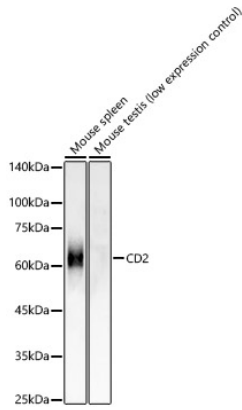
Affinity purification

### Storage

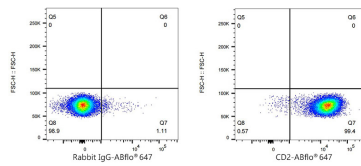
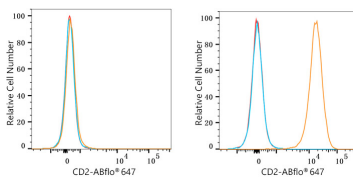
Store at -20°C. Avoid freeze / thaw cycles.

Buffer: PBS with 0.05% proclin300,0.05% BSA,50% glycerol,pH7.3.

## Validation Data



Western blot analysis of various lysates, using CD2 Rabbit mAb (A23527) at 1:1000 dilution.  
 Secondary antibody: HRP Goat Anti-Rabbit IgG (H+L) (AS014) at 1:10000 dilution.  
 Lysates/proteins: 25µg per lane.  
 Blocking buffer: 3% nonfat dry milk in TBST.  
 Detection: ECL Basic Kit (RM00020).  
 Exposure time: 5s.



Flow cytometry:  $1 \times 10^6$  4T1 cells (negative control, left) and C57BL/6 mouse Splenocytes (right) were surface-stained with CD2 Rabbit mAb (A23527, 2 µg/mL, orange line) or ABflo® 647 Rabbit IgG isotype control (A22070, 5 µl/Test, blue line), followed by Alexa Fluor® 647 conjugated goat anti-rabbit pAb staining. Non-fluorescently stained cells were used as blank control (red line).

Flow cytometry:  $1 \times 10^6$  C57BL/6 mouse Splenocytes were surface-stained with ABflo® 647 Rabbit IgG isotype control (A22070, 5 µl/Test, left) or CD2 Rabbit mAb (A23527, 2 µg/mL, right).