

LILRB1/CD85j/ILT2 Rabbit mAb

Catalog No.: A23528 **Recombinant**

Basic Information

Observed MW

110kDa

Calculated MW

49KDa/70KDa/71KDa

Category

Primary antibody

Applications

ELISA,WB,FC

Cross-Reactivity

Human

CloneNo number

ARC60700

Background

This gene is a member of the leukocyte immunoglobulin-like receptor (LIR) family, which is found in a gene cluster at chromosomal region 19q13.4. The encoded protein belongs to the subfamily B class of LIR receptors which contain two or four extracellular immunoglobulin domains, a transmembrane domain, and two to four cytoplasmic immunoreceptor tyrosine-based inhibitory motifs (ITIMs). The receptor is expressed on immune cells where it binds to MHC class I molecules on antigen-presenting cells and transduces a negative signal that inhibits stimulation of an immune response. It is thought to control inflammatory responses and cytotoxicity to help focus the immune response and limit autoreactivity. Multiple transcript variants encoding different isoforms have been found for this gene.

Recommended Dilutions

WB	1:500 - 1:1000
FC	1:500-1:1000

Immunogen Information

Gene ID

10859

Swiss Prot

Q8NHL6

Immunogen

Recombinant protein of human LILRB1/CD85j/ILT2.

Synonyms

ILT2; LIR1; MIR7; PIRB; CD85j; ILT-2; LIR-1; MIR-7; PIR-B; LILRB1/CD85j/ILT2

Contact

 | 400-999-6126 | cn.market@abclonal.com.cn | www.abclonal.com.cn

Product Information

Source

Rabbit

Isotype

IgG

Purification

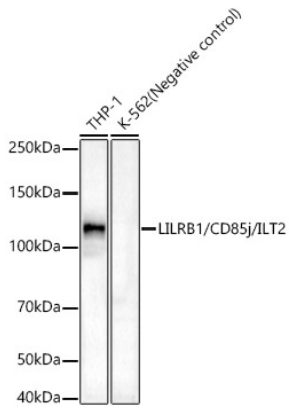
Affinity purification

Storage

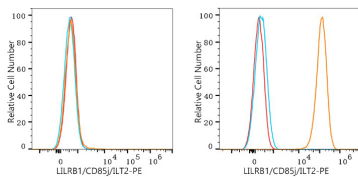
Store at -20°C. Avoid freeze / thaw cycles.

Buffer: PBS with 0.05% proclin300,0.05% BSA,50% glycerol,pH7.3.

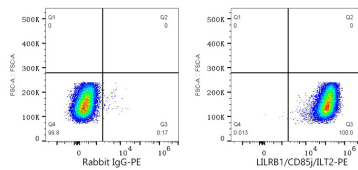
Validation Data



Western blot analysis of various lysates, using LILRB1/CD85j/ILT2 Rabbit mAb (A23528) at 1:1000 dilution. Secondary antibody: HRP Goat Anti-Rabbit IgG (H+L) (AS014) at 1:10000 dilution. Lysates/proteins: 25µg per lane. Blocking buffer: 3% nonfat dry milk in TBST. Detection: ECL Basic Kit (RM00020). Exposure time: 180s.



Flow cytometry: 1×10^6 K-562 cells (negative control, left) and Daudi cells (right) were surface-stained with LILRB1/CD85j/ILT2 Rabbit mAb (A23528, 2 µg/mL, orange line) or Rabbit IgG isotype control (AC042, 2 µg/mL, blue line), followed by PE Donkey anti-Rabbit pAb staining. Non-fluorescently stained cells were used as blank control (red line).



Flow cytometry: 1×10^6 Daudi cells were surface-stained with Rabbit IgG isotype control (AC042, 2 µg/mL, left) or LILRB1/CD85j/ILT2 Rabbit mAb (A23528, 2 µg/mL, right), followed by PE Donkey anti-Rabbit pAb staining.