

Mitofilin Rabbit mAb

Catalog No.: A23530 **Recombinant**

Basic Information

Observed MW

90 kDa

Calculated MW

84 kDa

Category

Primary antibody

Applications

WB, IHC-P, IP, ELISA

Cross-Reactivity

Human, Mouse

CloneNo number

ARC61198

Background

Enables RNA binding activity. Involved in cristae formation. Located in mitochondrial inner membrane. Part of MICOS complex.

Recommended Dilutions

WB 1:1000 - 1:6000

IHC-P 1:50 - 1:200

IP 0.5µg-4µg antibody for
200µg-400µg extracts of
whole cells

ELISA Recommended starting
concentration is 1 µg/mL.
Please optimize the
concentration based on
your specific assay
requirements.

Immunogen Information

Gene ID

10989

Swiss Prot

Q16891

Immunogen

Recombinant protein (or fragment). This information is considered to be commercially sensitive.

Synonyms

HMP; P87; P89; PIG4; Mic60; PIG52; MINOS2; P87/89; MICOS60; Mitofilin

Contact

 | 400-999-6126

 | cn.market@abclonal.com.cn

 | www.abclonal.com.cn

Product Information

Source

Rabbit

Isotype

IgG

Purification

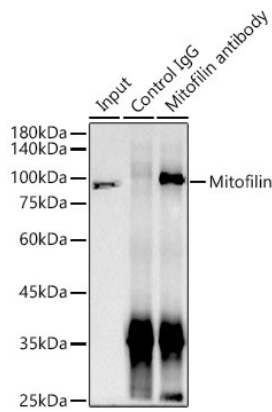
Affinity purification

Storage

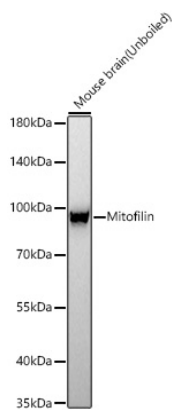
Store at -20°C. Avoid freeze / thaw cycles.

Buffer: PBS containing 50% glycerol and 0.05% BSA, preserved with proclin300 or sodium azide (as specified on the Certificate of Analysis), pH 7.3.

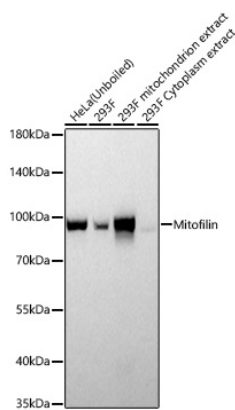
Validation Data



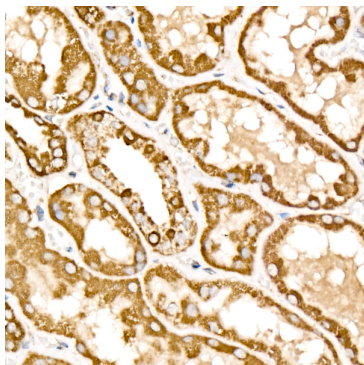
Immunoprecipitation analysis of 300 µg extracts of 293F cells using 3 µg Mitofilin Rabbit mAb (A23530). Western blot was performed from the immunoprecipitate using Mitofilin Rabbit mAb (A23530) at a dilution of 1:10000.



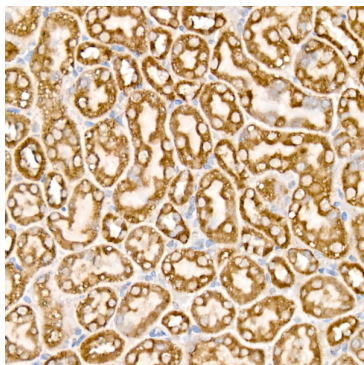
Western blot analysis of lysates from Mouse brain using Mitofilin Rabbit mAb (A23530) at 1:3000 dilution incubated at room temperature for 1.5 hours.
Secondary antibody: HRP-conjugated Goat anti-Rabbit IgG (H+L) (AS014) at 1:10000 dilution.
Lysates/proteins: 25 µg per lane.
Blocking buffer: 3% nonfat dry milk in TBST.
Detection: ECL Basic Kit (RM00020).
Exposure time: 45 s.



Western blot analysis of various lysates using Mitofilin Rabbit mAb (A23530) at 1:3000 dilution incubated at room temperature for 1.5 hours. Mitochondrion and Cytoplasm extracts derived from 293F cells.
Secondary antibody: HRP-conjugated Goat anti-Rabbit IgG (H+L) (AS014) at 1:10000 dilution.
Lysates/proteins: 25 µg per lane.
Blocking buffer: 3% nonfat dry milk in TBST.
Detection: ECL Basic Kit (RM00020).
Exposure time: 5 s.



Immunohistochemistry analysis of paraffin-embedded Human kidney using Mitofilin Rabbit mAb (A23530) at dilution of 1:200 (40x lens). High pressure antigen retrieval performed with 0.01M Citrate buffer (pH 6.0) prior to IHC staining.



Immunohistochemistry analysis of paraffin-embedded Mouse kidney using Mitofilin Rabbit mAb (A23530) at dilution of 1:200 (40x lens). High pressure antigen retrieval performed with 0.01M Citrate buffer (pH 6.0) prior to IHC staining.