

CD68 Rabbit mAb

Catalog No.: A23534

Recombinant

1 Publications

Basic Information

Observed MW

90-140kDa

Calculated MW

33KDa/34KDa

Category

Primary antibody

Applications

WB,IF/ICC,FC,ELISA

Cross-Reactivity

Mouse

CloneNo number

ARC60987

Background

Involved in several processes, including cellular response to lipopolysaccharide; cellular response to oxidised low-density lipoprotein particle stimulus; and negative regulation of dendritic cell antigen processing and presentation. Acts upstream of or within aging and cellular response to organic substance. Located in lysosome and plasma membrane. Is expressed in several structures, including central nervous system; embryo mesenchyme; heart blood vessel; liver; and spleen. Orthologous to human CD68 (CD68 molecule).

Recommended Dilutions

WB 1:500 - 1:2000

IF/ICC 1:50 - 1:200

FC 1:500 - 1:1000

ELISA Recommended starting concentration is 1 µg/mL. Please optimize the concentration based on your specific assay requirements.

Immunogen Information

Gene ID

12514

Swiss Prot

P31996

Immunogen

Recombinant protein (or fragment). This information is considered to be commercially sensitive.

Synonyms

Lamp4; gp110; Scard1; CD68

Contact

☎ | 400-999-6126

✉ | cn.market@abclonal.com.cn

🌐 | www.abclonal.com.cn

Product Information

Source

Rabbit

Isotype

IgG

Purification

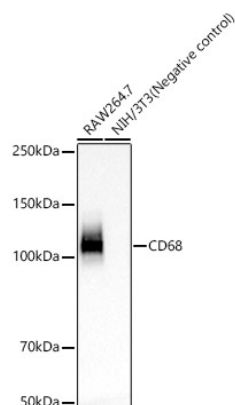
Affinity purification

Storage

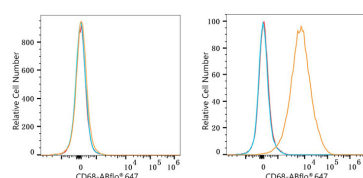
Store at -20°C. Avoid freeze / thaw cycles.

Buffer: PBS containing 50% glycerol and 0.05% BSA, preserved with proclin300 or sodium azide (as specified on the Certificate of Analysis), pH 7.3.

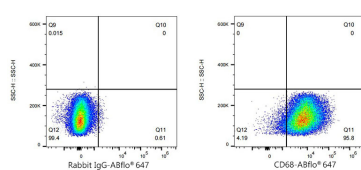
Validation Data



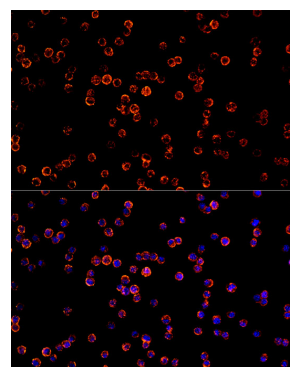
Western blot analysis of various lysates, using CD68 Rabbit mAb (A23534) at 1:1000 dilution. Secondary antibody: HRP-conjugated Goat anti-Rabbit IgG (H+L) (AS014) at 1:10000 dilution. Lysates/proteins: 25µg per lane. Blocking buffer: 3% nonfat dry milk in TBST. Detection: ECL Basic Kit (RM00020). Exposure time: 60s.



Flow cytometry: 1×10^6 NIH/3T3 cells (negative control, left) and RAW 264.7 cells (right) were surface-stained with CD68 Rabbit mAb (A23534, 2 µg/mL, orange line) or ABflo® 647 Rabbit IgG isotype control (A22070, 5 µL/Test, blue line), followed by Alexa Fluor® 647 conjugated goat anti-rabbit pAb staining. Non-fluorescently stained cells were used as blank control (red line).



Flow cytometry: 1×10^6 RAW 264.7 cells were surface-stained with ABflo® 647 Rabbit IgG isotype control (A22070, 5 µL/Test, left) or CD68 Rabbit mAb (A23534, 2 µg/mL, right).



Immunofluorescence analysis of RAW264.7 cells using CD68 Rabbit mAb (A23534) at dilution of 1:100 (40x lens). Secondary antibody: Cy3-conjugated Goat anti-Rabbit IgG (H+L) (AS007) at 1:500 dilution. Blue: DAPI for nuclear staining.