

# CHD4 Rabbit mAb

Catalog No.: A23537 **Recombinant**

## Basic Information

### Observed MW

Refer to figures

### Calculated MW

218kDa

### Category

Primary antibody

### Applications

ELISA, IHC-P

### Cross-Reactivity

Human, Mouse, Rat

### CloneNo number

ARC59887

## Background

The product of this gene belongs to the SNF2/RAD54 helicase family. It represents the main component of the nucleosome remodeling and deacetylase complex and plays an important role in epigenetic transcriptional repression. Patients with dermatomyositis develop antibodies against this protein. Somatic mutations in this gene are associated with serous endometrial tumors. Alternative splicing results in multiple transcript variants encoding different isoforms.

## Recommended Dilutions

IHC-P 1:50 - 1:200

## Immunogen Information

### Gene ID

1108

### Swiss Prot

Q14839

### Immunogen

Recombinant protein of human CHD4.

### Synonyms

CHD-4; Mi-2b; SIHIWES; Mi2-BETA; CHD4

## Contact

☎ | 400-999-6126

✉ | [cn.market@abclonal.com.cn](mailto:cn.market@abclonal.com.cn)

🌐 | [www.abclonal.com.cn](http://www.abclonal.com.cn)

## Product Information

### Source

Rabbit

### Isotype

IgG

### Purification

Affinity purification

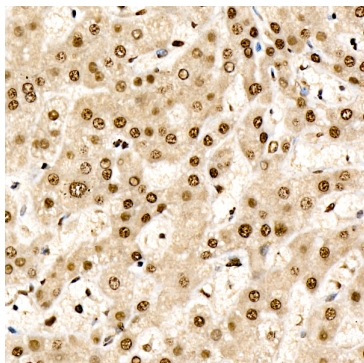
### Storage

Store at -20°C. Avoid freeze / thaw cycles.

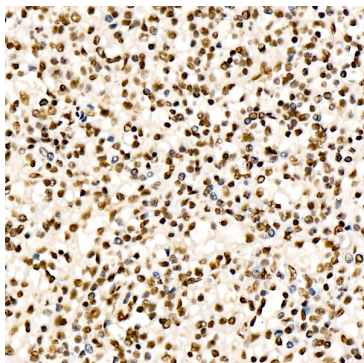
Buffer: PBS with 0.05% proclin300, 0.05% BSA, 50% glycerol, pH7.3.

## Validation Data

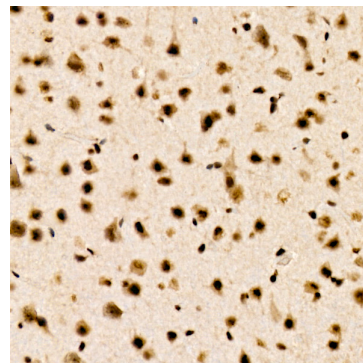
---



Immunohistochemistry analysis of paraffin-embedded human liver using CHD4 Rabbit mAb (A23537) at dilution of 1:200 (40x lens). Perform high pressure antigen retrieval with 10 mM citrate buffer pH 6.0 before commencing with IHC staining protocol.



Immunohistochemistry analysis of paraffin-embedded human spleen using CHD4 Rabbit mAb (A23537) at dilution of 1:200 (40x lens). Perform high pressure antigen retrieval with 10 mM citrate buffer pH 6.0 before commencing with IHC staining protocol.



Immunohistochemistry analysis of paraffin-embedded mouse brain using CHD4 Rabbit mAb (A23537) at dilution of 1:200 (40x lens). Perform high pressure antigen retrieval with 10 mM citrate buffer pH 6.0 before commencing with IHC staining protocol.