

# METTL4 Rabbit mAb

Catalog No.: A23539 **Recombinant**

## Basic Information

### Observed MW

Refer to figures

### Calculated MW

54kDa

### Category

Primary antibody

### Applications

ELISA, IHC-P

### Cross-Reactivity

Human, Mouse, Rat

### CloneNo number

ARC59459

## Background

Enables RNA methyltransferase activity and site-specific DNA-methyltransferase (adenine-specific) activity. Involved in nucleic acid metabolic process; regulation of RNA metabolic process; and regulation of mitochondrial DNA replication. Located in cytosol; mitochondrial matrix; and nucleus.

## Recommended Dilutions

IHC-P 1:50 - 1:200

## Immunogen Information

### Gene ID

64863

### Swiss Prot

Q8N3J2

### Immunogen

Recombinant fusion protein containing a sequence corresponding to amino acids 1-190 of human METTL4. (NP\_073751.3).

### Synonyms

HsT661; METTL4

## Contact

☎ | 400-999-6126

✉ | [cn.market@abclonal.com.cn](mailto:cn.market@abclonal.com.cn)

🌐 | [www.abclonal.com.cn](http://www.abclonal.com.cn)

## Product Information

### Source

Rabbit

### Isotype

IgG

### Purification

Affinity purification

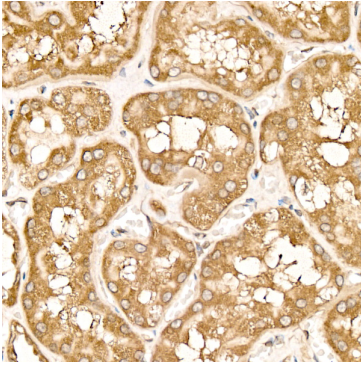
### Storage

Store at -20°C. Avoid freeze / thaw cycles.

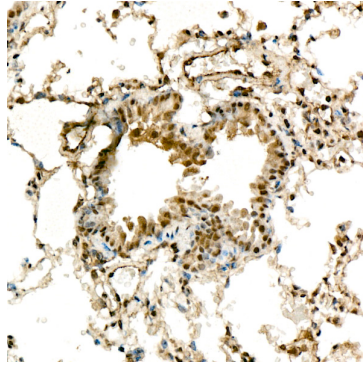
Buffer: PBS with 0.05% proclin300, 0.05% BSA, 50% glycerol, pH7.3.

## Validation Data

---



Immunohistochemistry analysis of paraffin-embedded Human kidney using METTL4 Rabbit mAb (A23539) at dilution of 1:100 (40x lens). High pressure antigen retrieval performed with 0.01M Citrate Bufferr (pH 6.0) prior to IHC staining.



Immunohistochemistry analysis of paraffin-embedded Mouse lung using METTL4 Rabbit mAb (A23539) at dilution of 1:100 (40x lens). High pressure antigen retrieval performed with 0.01M Citrate Bufferr (pH 6.0) prior to IHC staining.