

TLE2 Rabbit mAb

Catalog No.: A23547 **Recombinant**

Basic Information

Observed MW

80kDa

Calculated MW

80KDa

Category

Primary antibody

Applications

ELISA, WB, IHC-P

Cross-Reactivity

Human, Mouse, Rat

CloneNo number

ARC61201

Background

Enables transcription corepressor activity. Involved in negative regulation of canonical Wnt signaling pathway and negative regulation of transcription, DNA-templated. Located in focal adhesion and nuclear body.

Recommended Dilutions

WB	1:500 - 1:1000
IHC-P	1:50 - 1:200

Immunogen Information

Gene ID

7089

Swiss Prot

Q04725

Immunogen

Recombinant fusion protein containing a sequence corresponding to amino acids 1-138 of human TLE2. (NP_003251.2).

Synonyms

ESG; ESG2; GRG2; TLE2

Contact

 | 400-999-6126

 | cn.market@abclonal.com.cn

 | www.abclonal.com.cn

Product Information

Source

Rabbit

Isotype

IgG

Purification

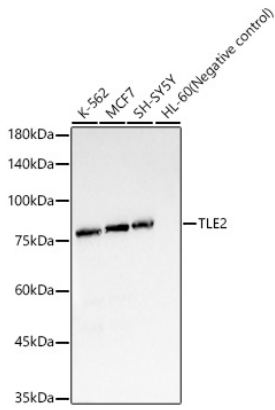
Affinity purification

Storage

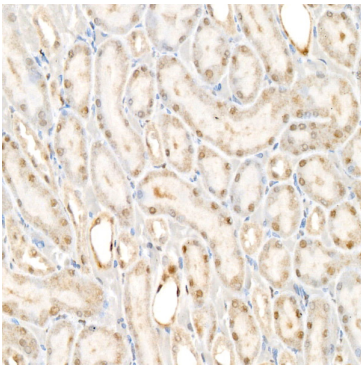
Store at -20°C. Avoid freeze / thaw cycles.

Buffer: PBS with 0.05% proclin300, 0.05% BSA, 50% glycerol, pH7.3.

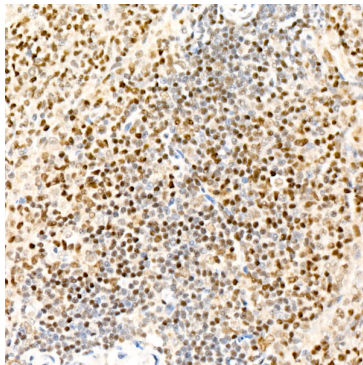
Validation Data



Western blot analysis of various lysates, using TLE2 Rabbit mAb (A23547) at 1:1000 dilution.
Secondary antibody: HRP Goat Anti-Rabbit IgG (H+L) (AS014) at 1:10000 dilution.
Lysates/proteins: 25µg per lane.
Blocking buffer: 3% nonfat dry milk in TBST.
Detection: ECL Basic Kit (RM00020).
Exposure time: 3s.



Immunohistochemistry analysis of paraffin-embedded Rat kidney using TLE2 Rabbit mAb (A23547) at dilution of 1:100 (40x lens). High pressure antigen retrieval performed with 0.01M Citrate Bufferr (pH 6.0) prior to IHC staining.



Immunohistochemistry analysis of paraffin-embedded Rat spleen using TLE2 Rabbit mAb (A23547) at dilution of 1:100 (40x lens). High pressure antigen retrieval performed with 0.01M Citrate Bufferr (pH 6.0) prior to IHC staining.