

# MonoMethyl-Histone H3-K4 Rabbit pAb

Catalog No.: A2355

42 Publications

## Basic Information

### Observed MW

17 kDa

### Calculated MW

15 kDa

### Category

Primary antibody

### Applications

WB, IHC-P, IF/ICC, ELISA, ChIP, ChIP-seq

### Cross-Reactivity

Human, Mouse, Rat, Other (Wide Range Predicted)

## Background

Histones are basic nuclear proteins that are responsible for the nucleosome structure of the chromosomal fiber in eukaryotes. Nucleosomes consist of approximately 146 bp of DNA wrapped around a histone octamer composed of pairs of each of the four core histones (H2A, H2B, H3, and H4). The chromatin fiber is further compacted through the interaction of a linker histone, H1, with the DNA between the nucleosomes to form higher order chromatin structures. This gene is intronless and encodes a replication-dependent histone that is a member of the histone H3 family. Transcripts from this gene lack polyA tails; instead, they contain a palindromic termination element. This gene is located separately from the other H3 genes that are in the histone gene cluster on chromosome 6p22-p21.3.

## Recommended Dilutions

**WB** 1:500 - 1:1000**IHC-P** 1:50 - 1:200**IF/ICC** 1:50 - 1:200

**ELISA** Recommended starting concentration is 1 µg/mL. Please optimize the concentration based on your specific assay requirements.

**ChIP** 5µg antibody for 5µg-10µg of Chromatin

**ChIP-seq** 1:20 - 1:100

## Contact

 | 400-999-6126 | [cn.market@abclonal.com.cn](mailto:cn.market@abclonal.com.cn)

## Immunogen Information

### Gene ID

8290/8350

### Swiss Prot

Q16695/P68431

### Immunogen

Synthetic peptide. This information is considered to be commercially sensitive.

### Synonyms

H3t; H3.4; H3/g; H3FT; H3C16; HIST3H3; MonoMethyl-Histone H3-K4

## Product Information

### Source

Rabbit

### Isotype

IgG

### Purification

Affinity purification

### Storage

Store at -20°C. Avoid freeze / thaw cycles.

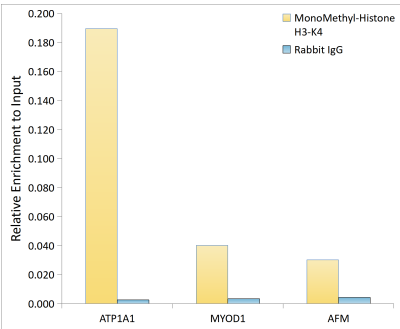
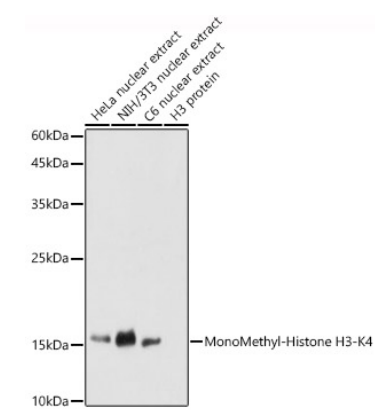
Buffer: PBS containing 50% glycerol, preserved with proclin300 or sodium azide (as specified on the Certificate of Analysis), pH 7.3.



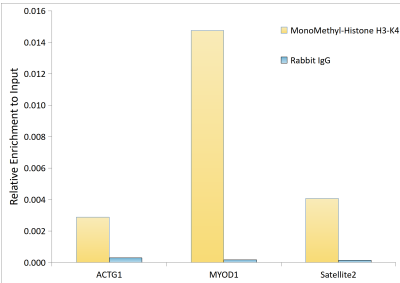
[www.abclonal.com.cn](http://www.abclonal.com.cn)

---

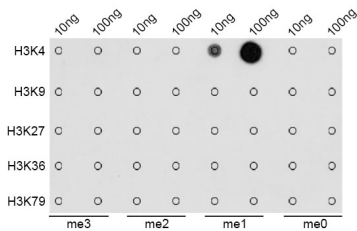
Validation Data



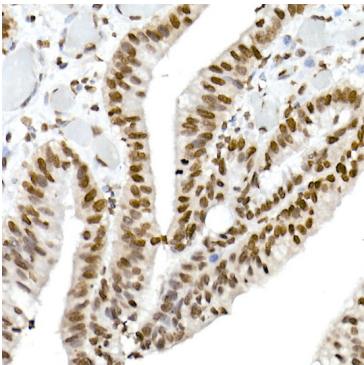
Chromatin immunoprecipitation analysis of extracts of HeLa cells, using MonoMethyl-Histone H3-K4 Rabbit pAb antibody (A2355) and rabbit IgG. The amount of immunoprecipitated DNA was checked by quantitative PCR. Histogram was constructed by the ratios of the immunoprecipitated DNA to the input.



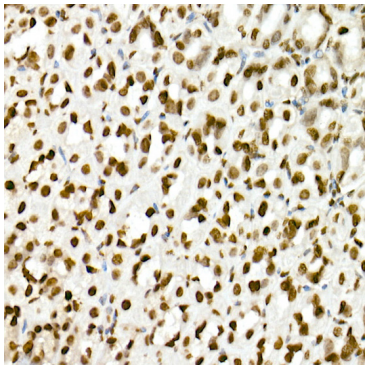
Chromatin immunoprecipitation analysis of extracts of HeLa cells, using MonoMethyl-Histone H3-K4 antibody (A2355) and rabbit IgG. The amount of immunoprecipitated DNA was checked by quantitative PCR. Histogram was constructed by the ratios of the immunoprecipitated DNA to the input.



Dot-blot analysis of all sorts of methylation peptides using MonoMethyl-Histone H3-K4



Immunohistochemistry analysis of paraffin-embedded Human colon carcinoma using



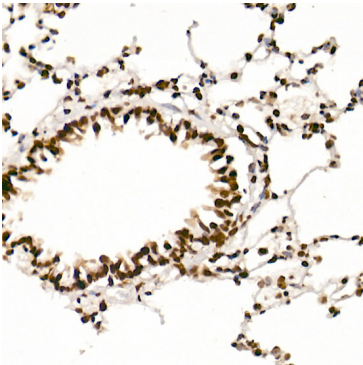
Immunohistochemistry analysis of paraffin-embedded Mouse stomach using

Validation Data

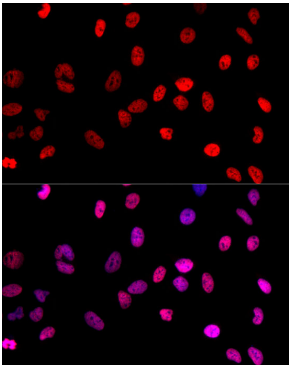
antibody (A2355).

MonoMethyl-Histone H3-K4 Rabbit pAb (A2355) at dilution of 1:200 (40x lens). High pressure antigen retrieval performed with 0.01M Citrate buffer (pH 6.0) prior to IHC staining.

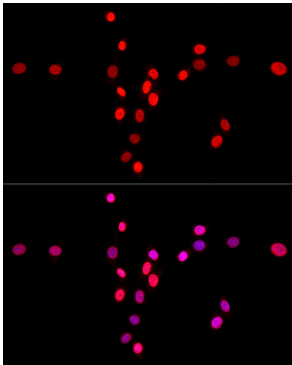
MonoMethyl-Histone H3-K4 Rabbit pAb (A2355) at dilution of 1:200 (40x lens). High pressure antigen retrieval performed with 0.01M Citrate buffer (pH 6.0) prior to IHC staining.



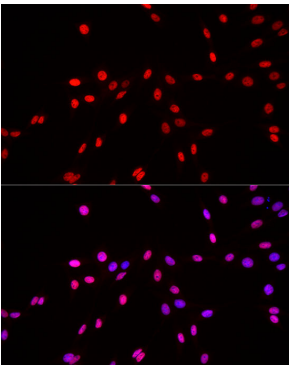
Immunohistochemistry analysis of paraffin-embedded Rat lung using MonoMethyl-Histone H3-K4 Rabbit pAb (A2355) at dilution of 1:200 (40x lens). High pressure antigen retrieval performed with 0.01M Citrate buffer (pH 6.0) prior to IHC staining.



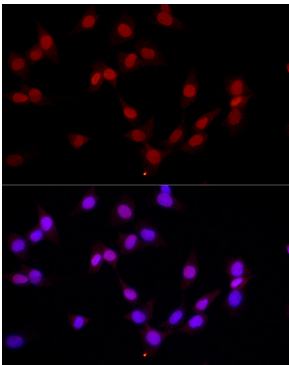
Immunofluorescence analysis of HeLa cells using MonoMethyl-Histone H3-K4 Rabbit pAb (A2355) at dilution of 1:20 (40x lens). Secondary antibody: Cy3-conjugated Goat anti-Rabbit IgG (H+L) (AS007) at 1:500 dilution. Blue: DAPI for nuclear staining.



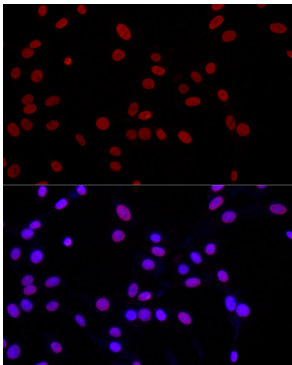
Immunofluorescence analysis of NIH/3T3 cells using MonoMethyl-Histone H3-K4 Rabbit pAb (A2355) at dilution of 1:20 (40x lens). Secondary antibody: Cy3-conjugated Goat anti-Rabbit IgG (H+L) (AS007) at 1:500 dilution. Blue: DAPI for nuclear staining.



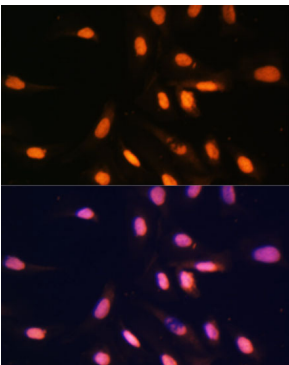
Immunofluorescence analysis of PC-12 cells using MonoMethyl-Histone H3-K4 Rabbit pAb (A2355) at dilution of 1:20 (40x lens). Secondary antibody: Cy3-conjugated Goat anti-Rabbit IgG (H+L) (AS007) at 1:500 dilution. Blue: DAPI for nuclear staining.



Immunofluorescence analysis of NIH/3T3 cells using MonoMethyl-Histone H3-K4 Rabbit pAb (A2355) at dilution of 1:20 (40x lens). Secondary antibody: Cy3-conjugated Goat anti-Rabbit IgG (H+L) (AS007) at 1:500 dilution. Blue: DAPI for nuclear staining.



Immunofluorescence analysis of PC-12 cells using MonoMethyl-Histone H3-K4 Rabbit pAb (A2355) at dilution of 1:20 (40x lens). Secondary antibody: Cy3-conjugated Goat anti-Rabbit IgG (H+L) (AS007) at 1:500 dilution. Blue: DAPI for nuclear staining.



Immunofluorescence analysis of U-2 OS cells using MonoMethyl-Histone H3-K4 Rabbit pAb (A2355) at dilution of 1:100. Secondary antibody: Cy3-conjugated Goat anti-Rabbit IgG (H+L) (AS007) at 1:500 dilution. Blue: DAPI for nuclear staining.

# Validation Data

---

DAPI for nuclear staining.