

TIMM22 Rabbit mAb

Catalog No.: A23557 **Recombinant**

Basic Information

Observed MW

20kDa

Calculated MW

20kDa

Category

Primary antibody

Applications

WB, ELISA

Cross-Reactivity

Human, Mouse, Rat

CloneNo number

ARC3118

Background

Multipass transmembrane proteins are brought into mitochondria and inserted into the mitochondrial inner membrane by way of the TIM22 complex. This complex has six subunits and is a twin-pore translocase. The protein encoded by this gene is a subunit of TIM22 and represents the voltage-activated and signal-gated channel.

Recommended Dilutions

WB 1:500 - 1:1000

ELISA Recommended starting concentration is 1 µg/mL. Please optimize the concentration based on your specific assay requirements.

Immunogen Information

Gene ID

29928

Swiss Prot

Q9Y584

Immunogen

A synthetic peptide corresponding to a sequence within amino acids 20-120aa of human TIMM22.

Synonyms

TEX4; TIM22; COXPD43; TIMM22

Contact

☎ | 400-999-6126

✉ | cn.market@abclonal.com.cn

🌐 | www.abclonal.com.cn

Product Information

Source

Rabbit

Isotype

IgG

Purification

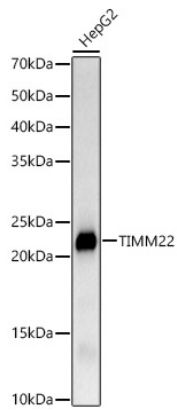
Affinity purification

Storage

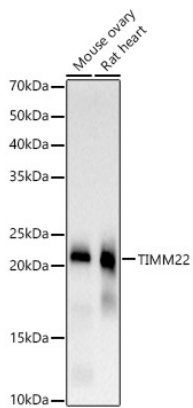
Store at -20°C. Avoid freeze / thaw cycles.

Buffer: PBS with 0.02% sodium azide, 0.05% BSA, 50% glycerol, pH7.3.

Validation Data



Western blot analysis of lysates from HepG2 cells, using TIMM22 Rabbit mAb (A23557) at 1:1000 dilution.
Secondary antibody: HRP-conjugated Goat anti-Rabbit IgG (H+L) (AS014) at 1:10000 dilution.
Lysates/proteins: 25µg per lane.
Blocking buffer: 3% nonfat dry milk in TBST.
Detection: ECL Basic Kit (RM00020).
Exposure time: 60s.



Western blot analysis of various lysates, using TIMM22 Rabbit mAb (A23557) at 1:1000 dilution.
Secondary antibody: HRP-conjugated Goat anti-Rabbit IgG (H+L) (AS014) at 1:10000 dilution.
Lysates/proteins: 25µg per lane.
Blocking buffer: 3% nonfat dry milk in TBST.
Detection: ECL Basic Kit (RM00020).
Exposure time: 60s.