

TriMethyl-Histone H3-K4 Rabbit pAb

Catalog No.: A2357 **77 Publications**

Basic Information

Observed MW

17 kDa

Calculated MW

15 kDa

Category

Primary antibody

Applications

WB,DB,IHC-P,ELISA,ChIP,ChIP-seq

Cross-Reactivity

Human, Mouse, Rat, Other (Wide Range Predicted)

Background

Histones are basic nuclear proteins that are responsible for the nucleosome structure of the chromosomal fiber in eukaryotes. Nucleosomes consist of approximately 146 bp of DNA wrapped around a histone octamer composed of pairs of each of the four core histones (H2A, H2B, H3, and H4). The chromatin fiber is further compacted through the interaction of a linker histone, H1, with the DNA between the nucleosomes to form higher order chromatin structures. This gene is intronless and encodes a replication-dependent histone that is a member of the histone H3 family. Transcripts from this gene lack polyA tails; instead, they contain a palindromic termination element. This gene is located separately from the other H3 genes that are in the histone gene cluster on chromosome 6p22-p21.3.

Recommended Dilutions

WB 1:100 - 1:500**DB** 1:500 - 1:2000**IHC-P** 1:50 - 1:200**ELISA** Recommended starting concentration is 1 µg/mL. Please optimize the concentration based on your specific assay requirements.**ChIP** 5µg antibody for 5µg-10µg of Chromatin**ChIP-seq** 1:20 - 1:100

Contact

 | 400-999-6126 | cn.market@abclonal.com.cn

Immunogen Information

Gene ID

8290/8350

Swiss Prot

Q16695/P68431

Immunogen

Synthetic peptide. This information is considered to be commercially sensitive.

Synonyms

H3t; H3.4; H3/g; H3FT; H3C16; HIST3H3; TriMethyl-Histone H3-K4

Product Information

Source

Rabbit

Isotype

IgG

Purification

Affinity purification

Storage

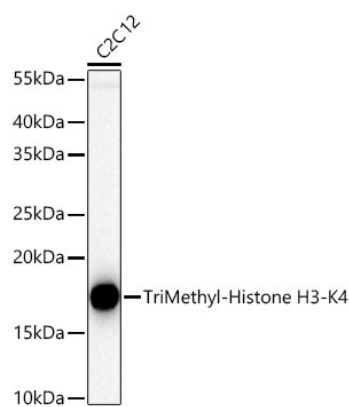
Store at -20°C. Avoid freeze / thaw cycles.

Buffer: PBS containing 50% glycerol, preserved with proclin300 or sodium azide (as specified on the Certificate of Analysis), pH 7.3.

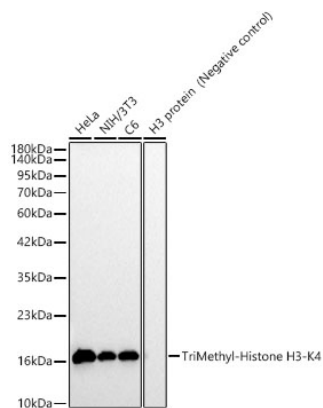


www.abclonal.com.cn

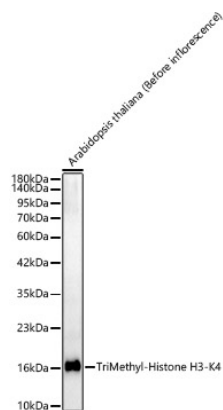
Validation Data



Western blot analysis of lysates from C2C12 cells using TriMethyl-Histone H3-K4 Rabbit pAb (A2357) at 1:50000 dilution incubated overnight at 4°C.
Secondary antibody: HRP-conjugated Goat anti-Rabbit IgG (H+L) (AS014) at 1:10000 dilution.
Lysates/proteins: 25 µg per lane.
Blocking buffer: 3% nonfat dry milk in TBST.
Detection: ECL Basic Kit (RM00020).
Exposure time: 1s.

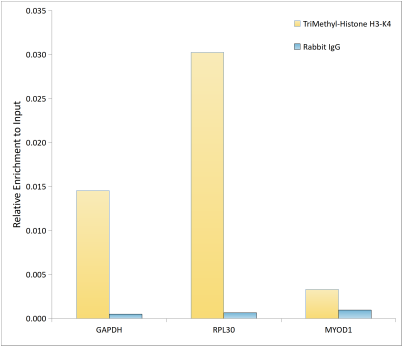


Western blot analysis of various lysates, using TriMethyl-Histone H3-K4 Rabbit pAb (A2357) at 1:400 dilution.
Secondary antibody: HRP-conjugated Goat anti-Rabbit IgG (H+L) (AS014) at 1:10000 dilution.
Lysates/proteins: 25µg per lane.
Blocking buffer: 3% nonfat dry milk in TBST.
Detection: ECL Basic Kit (RM00020).
Exposure time: 90s.

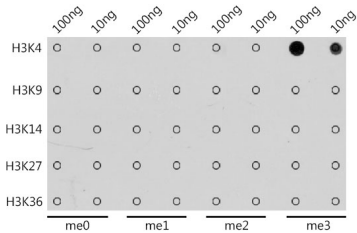


Western blot analysis of Arabidopsis thaliana (Before inflorescence), using TriMethyl-Histone H3-K4 Rabbit pAb (A2357) at 1:400 dilution.
Secondary antibody: HRP-conjugated Goat anti-Rabbit IgG (H+L) (AS014) at 1:10000 dilution.
Lysates/proteins: 25µg per lane.
Blocking buffer: 3% nonfat dry milk in TBST.
Detection: ECL Basic Kit (RM00020).
Exposure time: 90s.

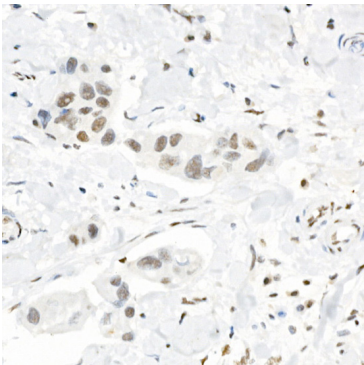
Validation Data



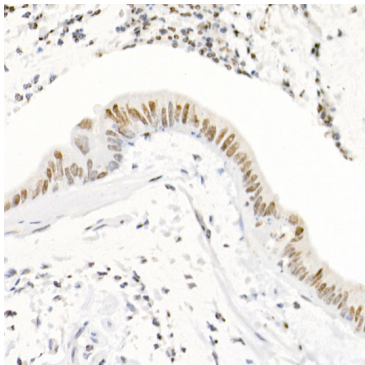
Chromatin immunoprecipitation analysis of extracts of 293F cells, using TriMethyl-Histone H3-K4 Rabbit pAb antibody (A2357) and rabbit IgG. The amount of immunoprecipitated DNA was checked by quantitative PCR. Histogram was constructed by the ratios of the immunoprecipitated DNA to the input.



Dot-blot analysis of all sorts of methylation peptides using TriMethyl-Histone H3-K4 antibody (A2357) at 1:1000 dilution.



Immunohistochemistry analysis of paraffin-embedded Human breast cancer using TriMethyl-Histone H3-K4 Rabbit pAb (A2357) at dilution of 1:20 (40x lens). High pressure antigen retrieval performed with 0.01M Citrate buffer (pH 6.0) prior to IHC staining.



Immunohistochemistry analysis of paraffin-embedded Human colon carcinoma using TriMethyl-Histone H3-K4 Rabbit pAb (A2357) at dilution of 1:20 (40x lens). High pressure antigen retrieval performed with 0.01M Citrate buffer (pH 6.0) prior to IHC staining.