

BCL2L15 Rabbit mAb

Catalog No.: A23570 **Recombinant**

Basic Information

Observed MW

18kDa

Calculated MW

18kDa

Category

Primary antibody

Applications

WB,ELISA

Cross-Reactivity

Human

CloneNo number

ARC3078

Background

Predicted to be involved in apoptotic process and regulation of apoptotic process. Predicted to be active in cytosol and nucleus.

Recommended Dilutions

WB 1:500 - 1:1000

ELISA Recommended starting concentration is 1 µg/mL. Please optimize the concentration based on your specific assay requirements.

Immunogen Information

Gene ID

440603

Swiss Prot

Q5TBC7

Immunogen

Recombinant fusion protein containing a sequence corresponding to amino acids 1-163 of human BCL2L15 (NP_001010922.1).

Synonyms

Bfk; C1orf178; BCL2L15

Contact

 | 400-999-6126

 | cn.market@abclonal.com.cn

 | www.abclonal.com.cn

Product Information

Source

Rabbit

Isotype

IgG

Purification

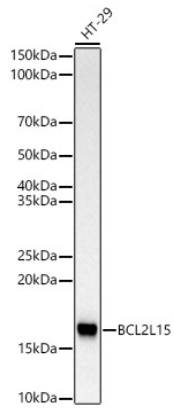
Affinity purification

Storage

Store at -20°C. Avoid freeze / thaw cycles.

Buffer: PBS with 0.02% sodium azide,0.05% BSA,50% glycerol,pH7.3.

Validation Data



Western blot analysis of lysates from HT-29 cells, using BCL2L15 Rabbit mAb (A23570) at 1:1000 dilution.
Secondary antibody: HRP-conjugated Goat anti-Rabbit IgG (H+L) (AS014) at 1:10000 dilution.
Lysates/proteins: 25µg per lane.
Blocking buffer: 3% nonfat dry milk in TBST.
Detection: ECL Basic Kit (RM00020).
Exposure time: 180s.