

ABflo® 594 Rabbit anti-Human CD85j/ILT2 mAb

Catalog No.: A23589

Basic Information

Observed MW

Calculated MW

49kDa/70kDa/71kDa

Category

Primary antibody

Applications

FC

Cross-Reactivity

Human

CloneNo number

ARC60703

Conjugate

ABflo® 594. Ex:588nm. Em:604nm.

Recommended Dilutions

FC 5 µl per 10⁶ cells in
100 µl volume

Background

This gene is a member of the leukocyte immunoglobulin-like receptor (LIR) family, which is found in a gene cluster at chromosomal region 19q13.4. The encoded protein belongs to the subfamily B class of LIR receptors which contain two or four extracellular immunoglobulin domains, a transmembrane domain, and two to four cytoplasmic immunoreceptor tyrosine-based inhibitory motifs (ITIMs). The receptor is expressed on immune cells where it binds to MHC class I molecules on antigen-presenting cells and transduces a negative signal that inhibits stimulation of an immune response. It is thought to control inflammatory responses and cytotoxicity to help focus the immune response and limit autoreactivity. Multiple transcript variants encoding different isoforms have been found for this gene.

Immunogen Information

Gene ID

10859

Swiss Prot

Q8NHL6

Immunogen

Recombinant protein (or fragment). This information is considered to be commercially sensitive.

Synonyms

ILT2; LIR1; MIR7; PIRB; CD85j; ILT-2; LIR-1; MIR-7; PIR-B

Contact

☎ | 400-999-6126

✉ | cn.market@abclonal.com.cn

🌐 | www.abclonal.com.cn

Product Information

Source

Rabbit

Isotype

IgG

Purification

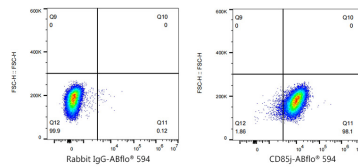
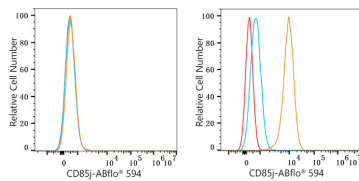
Affinity purification

Storage

Store at 2-8°C. Avoid freeze.

Buffer: PBS containing 0.2% BSA, preserved with proclin300 or sodium azide (as specified on the Certificate of Analysis), pH 7.3.

Validation Data



Flow cytometry: 1×10^6 K-562 cells (negative control, left) and Daudi cells (right) were surface-stained with ABflo® 594 Rabbit anti-Human CD85j/ILT2 mAb (A23589, 5 μ l/Test, orange line) or ABflo® 594 Rabbit IgG isotype control (A23821, 5 μ l/Test, blue line). Non-fluorescently stained cells were used as blank control (red line).

Flow cytometry: 1×10^6 Daudi cells were surface-stained with ABflo® 594 Rabbit IgG isotype control (5 μ l/Test, left) or ABflo® 594 Rabbit anti-Human CD85j/ILT2 mAb (A23589, 5 μ l/Test, right).