

# TIMM13 Rabbit pAb

Catalog No.: A23597

## Basic Information

### Observed MW

11kDa

### Calculated MW

11kDa

### Category

Primary antibody

### Applications

ELISA, WB

### Cross-Reactivity

Human, Mouse, Rat

## Background

This gene encodes a member of the evolutionarily conserved TIMM (translocase of inner mitochondrial membrane) family of proteins that function as chaperones in the import of proteins from the cytoplasm into the mitochondrial inner membrane. Proteins of this family play a role in collecting substrate proteins from the translocase of the outer mitochondrial membrane (TOM) complex and delivering them to either the sorting and assembly machinery in the outer mitochondrial membrane (SAM) complex or the TIMM22 complex in the inner mitochondrial membrane. The encoded protein and the translocase of mitochondrial inner membrane 8a protein form a 70 kDa complex in the intermembrane space.

## Recommended Dilutions

WB 1:2000 - 1:4000

## Immunogen Information

### Gene ID

26517

### Swiss Prot

Q9Y5L4

### Immunogen

Recombinant fusion protein containing a sequence corresponding to amino acids 1-95 of human TIMM13[[NP\\_036590.1](#)].

### Synonyms

ppv1; TIM13; TIM13B; TIMM13A; TIMM13B; TIMM13

## Contact

☎ | 400-999-6126

✉ | [cn.market@abclonal.com.cn](mailto:cn.market@abclonal.com.cn)

🌐 | [www.abclonal.com.cn](http://www.abclonal.com.cn)

## Product Information

### Source

Rabbit

### Isotype

IgG

### Purification

Affinity purification

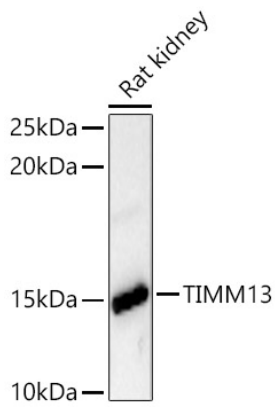
### Storage

Store at -20°C. Avoid freeze / thaw cycles.

Buffer: PBS with 0.05% proclin300, 50% glycerol, pH7.3.

## Validation Data

---



Western blot analysis of lysates from Rat kidney, using TIMM13 Rabbit pAb (A23597) at 1:4000 dilution.  
Secondary antibody: HRP Goat Anti-Rabbit IgG (H+L) (AS014) at 1:10000 dilution.  
Lysates/proteins: 25 $\mu$ g per lane.  
Blocking buffer: 3% nonfat dry milk in TBST.  
Detection: ECL Basic Kit (RM00020).  
Exposure time: 180s.