

AFG3L2 Rabbit pAb

Catalog No.: A23598

Basic Information

Observed MW

80kDa

Calculated MW

89kDa

Category

Primary antibody

Applications

ELISA, WB, IHC-P, IP

Cross-Reactivity

Human, Mouse, Rat

Background

This gene encodes a protein localized in mitochondria and closely related to paraplegin. The paraplegin gene is responsible for an autosomal recessive form of hereditary spastic paraplegia. This gene is a candidate gene for other hereditary spastic paraplegias or neurodegenerative disorders.

Recommended Dilutions

WB 1:500 - 1:1000

IHC-P 1:50 - 1:200

IP 0.5µg-4µg antibody for
400µg-600µg extracts of
whole cells

Immunogen Information

Gene ID

10939

Swiss Prot

Q9Y4W6

Immunogen

Recombinant fusion protein containing a sequence corresponding to amino acids 538-797 of human AFG3L2 [NP_006787.2].

Synonyms

OPA12; SCA28; SPAX5; AFG3L2

Contact

 | 400-999-6126

 | cn.market@abclonal.com.cn

 | www.abclonal.com.cn

Product Information

Source

Rabbit

Isotype

IgG

Purification

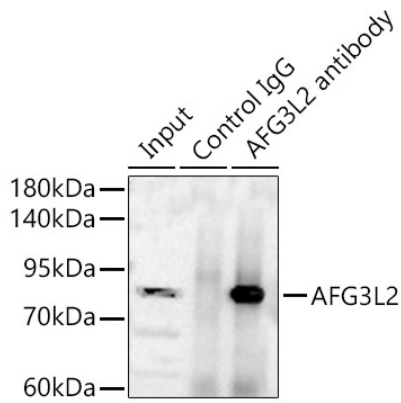
Affinity purification

Storage

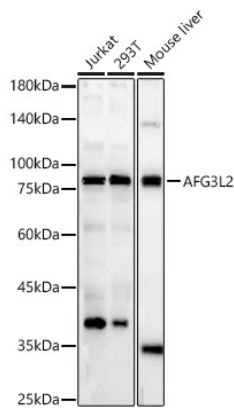
Store at -20°C. Avoid freeze / thaw cycles.

Buffer: PBS with 0.05% proclin300, 50% glycerol, pH7.3.

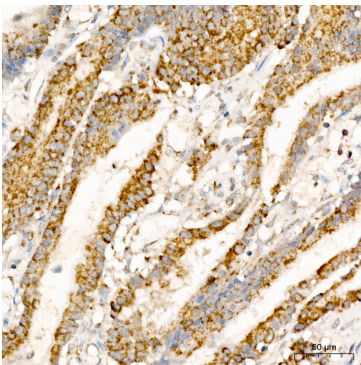
Validation Data



Immunoprecipitation analysis of 600ug extracts of Mouse liver using 3ug AFG3L2 Rabbit pAb (A23598) at a dilution of 1:100. Western blot was performed from the immunoprecipitate using AFG3L2 Rabbit pAb (A23598) at a dilution of 1:500.



Western blot analysis of various lysates, using AFG3L2 Rabbit pAb (A23598) at 1:1000 dilution. Secondary antibody: HRP Goat Anti-Rabbit IgG (H+L) (AS014) at 1:10000 dilution. Lysates/proteins: 25µg per lane. Blocking buffer: 3% nonfat dry milk in TBST. Detection: ECL Basic Kit (RM00020). Exposure time: 60s.



Immunohistochemistry analysis of AFG3L2 in paraffin-embedded Human colon carcinoma tissue using AFG3L2 Rabbit pAb (A23598) at a dilution of 1:200 (40x lens). High pressure antigen retrieval was performed with 0.01 M citrate buffer (pH 6.0) prior to IHC staining.