

# MonoMethyl-Histone H3-K27 Rabbit pAb

Catalog No.: A2361SP **9 Publications**

## Basic Information

### Observed MW

17 kDa

### Calculated MW

15 kDa

### Category

Primary antibody

### Applications

WB,IF/ICC,DB,ELISA

### Cross-Reactivity

Human, Mouse, Rat, Other (Wide Range Predicted)

## Background

Histones are basic nuclear proteins that are responsible for the nucleosome structure of the chromosomal fiber in eukaryotes. This structure consists of approximately 146 bp of DNA wrapped around a nucleosome, an octamer composed of pairs of each of the four core histones (H2A, H2B, H3, and H4). The chromatin fiber is further compacted through the interaction of a linker histone, H1, with the DNA between the nucleosomes to form higher order chromatin structures. This gene is intronless and encodes a replication-dependent histone that is a member of the histone H3 family. Transcripts from this gene lack polyA tails; instead, they contain a palindromic termination element. This gene is found in the large histone gene cluster on chromosome 6p22-p21.3.

## Recommended Dilutions

**WB** 1:1000 - 1:3000

**IF/ICC** 1:200 - 1:400

**DB** 1:500 - 1:2000

### ELISA

Recommended starting concentration is 1 µg/mL. Please optimize the concentration based on your specific assay requirements. For high-ratio antibody dilutions ( $\geq 1:10000$ ) a sequential dilution method is strongly recommended to ensure measurement accuracy.

## Immunogen Information

### Gene ID

8290/8350

### Swiss Prot

Q16695/P68431

### Immunogen

Synthetic peptide. This information is considered to be commercially sensitive.

### Synonyms

H3/A; H3C2; H3C3; H3C4; H3C6; H3C7; H3C8; H3FA; H3C10; H3C11; H3C12; HIST1H3A; MonoMethyl-Histone H3-K27

## Product Information

### Source

Rabbit

### Isotype

IgG

### Purification

Affinity purification

### Storage

Store at -20°C. Avoid freeze / thaw cycles.

Buffer: PBS, pH 7.3, containing 50% glycerol. Preserved with Proclin300 or sodium azide. May contain 0.05% BSA as specified on the Certificate of Analysis.

## Contact

---

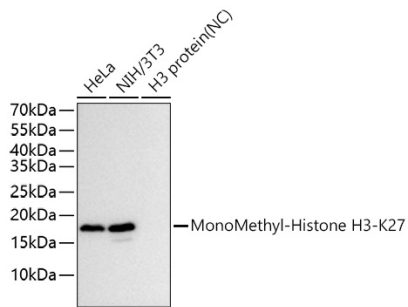
 | 400-999-6126

 | [cn.market@abclonal.com.cn](mailto:cn.market@abclonal.com.cn)

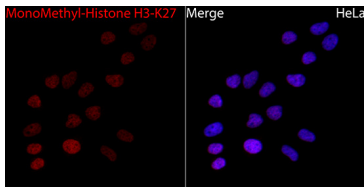
 | [www.abclonal.com.cn](http://www.abclonal.com.cn)

---

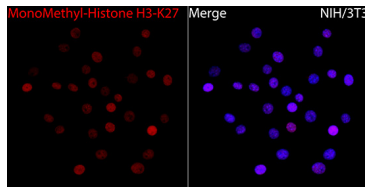
## Validation Data



Western blot analysis of various lysates using MonoMethyl-Histone H3-K27 Rabbit pAb (A2361SP) at 1:1000 dilution incubated overnight at 4°C.  
Secondary antibody: HRP-conjugated Goat anti-Rabbit IgG (H+L) (AS014) at 1:10000 dilution.  
Lysates/proteins: 25 µg per lane.  
Blocking buffer: 3% nonfat dry milk in TBST.  
Detection: ECL Basic Kit (RM00020).  
Negative control (NC): H3 protein.  
Exposure time: 10 s.



Immunofluorescence analysis of HeLa cells using MonoMethyl-Histone H3-K27 Rabbit pAb (A2361SP) at a dilution of 1:200 (40x lens). Secondary antibody: Cy3-conjugated Goat anti-Rabbit IgG (H+L) (AS007) at 1:500 dilution. Blue: DAPI for nuclear staining.



Immunofluorescence analysis of NIH/3T3 cells using MonoMethyl-Histone H3-K27 Rabbit pAb (A2361SP) at a dilution of 1:200 (40x lens). Secondary antibody: Cy3-conjugated Goat anti-Rabbit IgG (H+L) (AS007) at 1:500 dilution. Blue: DAPI for nuclear staining.