

Human IgG3 Rabbit pAb

Catalog No.: A23641

Basic Information

Observed MW

68kDa/55kDa

Calculated MW

41kDa

Category

Primary antibody

Applications

WB, ELISA

Cross-Reactivity

Human

Background

Predicted to enable antigen binding activity and immunoglobulin receptor binding activity. Involved in retina homeostasis. Located in blood microparticle and extracellular exosome.

Recommended Dilutions

WB 1:100 - 1:500

ELISA Recommended starting concentration is 1 µg/mL. Please optimize the concentration based on your specific assay requirements.

Immunogen Information

Gene ID

3502

Swiss Prot

P01860

Immunogen

Recombinant protein (or fragment). This information is considered to be commercially sensitive.

Synonyms

IgG3; Human IgG3

Contact

☎ | 400-999-6126

✉ | cn.market@abclonal.com.cn

🌐 | www.abclonal.com.cn

Product Information

Source

Rabbit

Isotype

IgG

Purification

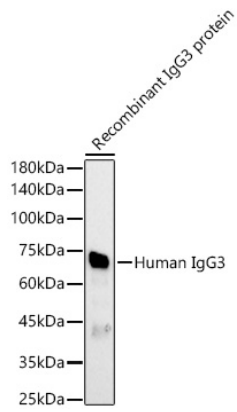
Affinity purification

Storage

Store at -20°C. Avoid freeze / thaw cycles.

Buffer: PBS containing 50% glycerol, preserved with proclin300 or sodium azide (as specified on the Certificate of Analysis), pH 7.3.

Validation Data



Western blot analysis of recombinant IgG3 protein using Human IgG3 Rabbit pAb (A23641) at 1:500 dilution.

Secondary antibody: HRP-conjugated Goat anti-Rabbit IgG (H+L) (AS014) at 1:10000 dilution.

Lysates/proteins: 10ng per lane.

Blocking buffer: 3% nonfat dry milk in TBST.

Detection: ECL Basic Kit (RM00020).

Exposure time: 60s.