

# DOCK3 Rabbit pAb

**Catalog No.: A23643**

## Basic Information

### Observed MW

223kDa

### Calculated MW

233KDa

### Category

Primary antibody

### Applications

WB,ELISA

### Cross-Reactivity

Human

## Background

This gene is specifically expressed in the central nervous system (CNS). It encodes a member of the DOCK (dedicator of cytokinesis) family of guanine nucleotide exchange factors (GEFs). This protein, dedicator of cytokinesis 3 (DOCK3), is also known as modifier of cell adhesion (MOCA) and presenilin-binding protein (PBP). The DOCK3 and DOCK1, -2 and -4 share several conserved amino acids in their DHR-2 (DOCK homology region 2) domains that are required for GEF activity, and bind directly to WAVE proteins [Wiskott-Aldrich syndrome protein (WASP) family Verprolin-homologous proteins] via their DHR-1 domains. The DOCK3 induces axonal outgrowth in CNS by stimulating membrane recruitment of the WAVE complex and activating the small G protein Rac1. This gene is associated with an attention deficit hyperactivity disorder-like phenotype by a complex chromosomal rearrangement.

## Recommended Dilutions

**WB** 1:1000 - 1:5000

**ELISA** Recommended starting concentration is 1 µg/mL. Please optimize the concentration based on your specific assay requirements.

## Immunogen Information

### Gene ID

1795

### Swiss Prot

Q8IZD9

### Immunogen

Recombinant protein (or fragment). This information is considered to be commercially sensitive.

### Synonyms

PBP; MOCA; NEDIDHA; DOCK3

## Contact

☎ | 400-999-6126

✉ | [cn.market@abclonal.com.cn](mailto:cn.market@abclonal.com.cn)

🌐 | [www.abclonal.com.cn](http://www.abclonal.com.cn)

## Product Information

### Source

Rabbit

### Isotype

IgG

### Purification

Affinity purification

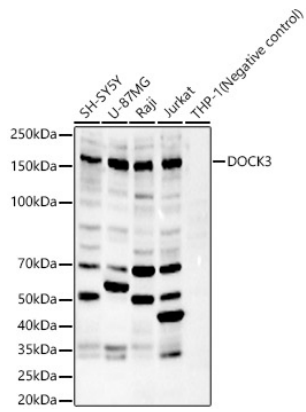
### Storage

Store at -20°C. Avoid freeze / thaw cycles.

Buffer: PBS containing 50% glycerol, preserved with proclin300 or sodium azide (as specified on the Certificate of Analysis), pH 7.3.

## Validation Data

---



Western blot analysis of various lysates, using DOCK3 Rabbit pAb (A23643) at 1:2000 dilution.  
Secondary antibody: HRP-conjugated Goat anti-Rabbit IgG (H+L) (AS014) at 1:10000 dilution.  
Lysates/proteins: 25µg per lane.  
Blocking buffer: 3% nonfat dry milk in TBST.  
Detection: ECL Basic Kit (RM00020).  
Exposure time: 90s.