

CD86 Rabbit pAb

Catalog No.: A23649

Basic Information

Observed MW

60-85kDa

Calculated MW

34KDa

Category

Primary antibody

Applications

ELISA, WB

Cross-Reactivity

Mouse

Background

Predicted to enable signaling receptor binding activity. Involved in several processes, including CD40 signaling pathway; activation of phospholipase C activity; and positive regulation of macromolecule metabolic process. Acts upstream of or within several processes, including cellular response to lipopolysaccharide; defense response to virus; and positive regulation of T cell proliferation. Located in external side of plasma membrane and intracellular membrane-bounded organelle. Is expressed in central nervous system and retina. Used to study Guillain-Barre syndrome. Human ortholog(s) of this gene implicated in several diseases, including Henoch-Schoenlein purpura; autoimmune disease (multiple); chronic lymphocytic leukemia; chronic obstructive pulmonary disease; and systemic sclerosis. Orthologous to human CD86 (CD86 molecule).

Recommended Dilutions

WB 1:1000 - 1:5000

Immunogen Information

Gene ID

12524

Swiss Prot

P42082

Immunogen

Recombinant fusion protein containing a sequence corresponding to amino acids 24-245 of mouse CD86. (NM_019388.3).

Synonyms

B7; B70; MB7; B7-2; B7.2; CLS1; Ly58; ETC-1; Ly-58; MB7-2; Cd28l2; TS/A-2; CD86

Contact

☎ | 400-999-6126

✉ | cn.market@abclonal.com.cn

🌐 | www.abclonal.com.cn

Product Information

Source

Rabbit

Isotype

IgG

Purification

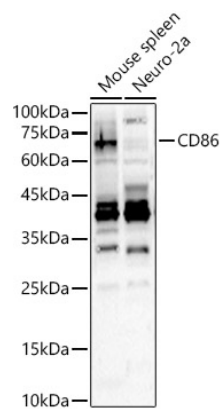
Affinity purification

Storage

Store at -20°C. Avoid freeze / thaw cycles.

Buffer: PBS with 0.02% sodium azide, 50% glycerol, pH7.3.

Validation Data



Western blot analysis of various lysates, using CD86 Rabbit pAb (A23649) at 1:3000 dilution.
Secondary antibody: HRP Goat Anti-Rabbit IgG (H+L) (AS014) at 1:10000 dilution.
Lysates/proteins: 25µg per lane.
Blocking buffer: 3% nonfat dry milk in TBST.
Detection: ECL Basic Kit (RM00020).
Exposure time: 30s.