

# Hmox1 Rabbit pAb

Catalog No.: A23650

## Basic Information

### Observed MW

28-33kDa

### Calculated MW

32KDa

### Category

Primary antibody

### Applications

WB,IHC-P,IF/ICC,ELISA

### Cross-Reactivity

Mouse, Rat

## Background

Predicted to enable several functions, including heme binding activity; heme oxygenase (decyclizing) activity; and protein homodimerization activity. Acts upstream of or within several processes, including cellular response to cisplatin; cellular response to metal ion; and regulation of macroautophagy. Located in nucleus. Is expressed in several structures, including alimentary system; central nervous system; early conceptus; genitourinary system; and sensory organ. Used to study hemochromatosis and malaria. Human ortholog(s) of this gene implicated in several diseases, including artery disease (multiple); cerebrovascular disease (multiple); factor VIII deficiency; lung disease (multiple); and sickle cell anemia. Orthologous to human HMOX1 (heme oxygenase 1).

## Recommended Dilutions

<b>WB</b>	1:500 - 1:1000
<b>IHC-P</b>	1:50 - 1:200
<b>IF/ICC</b>	1:50 - 1:200
<b>ELISA</b>	Recommended starting concentration is 1 µg/mL. Please optimize the concentration based on your specific assay requirements.

## Contact

	400-999-6126
	cn.market@abclonal.com.cn
	www.abclonal.com.cn

## Immunogen Information

### Gene ID

15368

### Swiss Prot

P14901

### Immunogen

Recombinant Protein corresponding to a sequence within amino acids 1-266 of mouse Hmox1(NP\_034572.1).

### Synonyms

HO1; HO-1; Hmox; Hemox; Hsp32; D8Wsu38e; Hmox1

## Product Information

### Source

Rabbit

### Isotype

IgG

### Purification

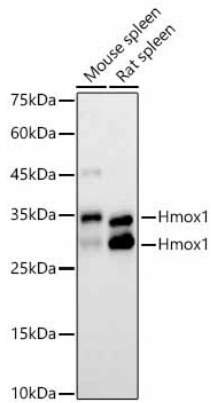
Affinity purification

### Storage

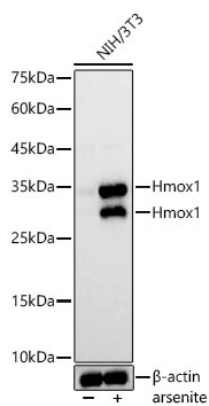
Store at -20°C. Avoid freeze / thaw cycles.

Buffer: PBS with 0.09% Sodium azide,50% glycerol,pH7.3.

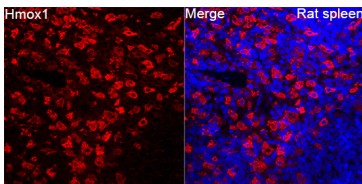
## Validation Data



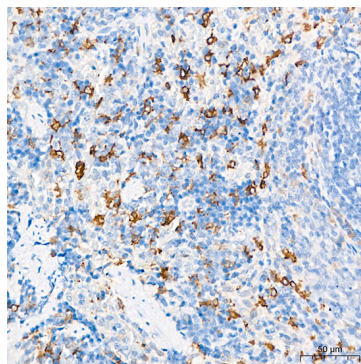
Western blot analysis of various lysates using Hmox1 Rabbit pAb (A23650) at 1:1000 dilution. Secondary antibody: HRP-conjugated Goat anti-Rabbit IgG (H+L) (AS014) at 1:10000 dilution. Lysates / proteins: 25 µg per lane. Blocking buffer: 3 % nonfat dry milk in TBST. Detection: ECL Basic Kit (RM00020). Exposure time: 30s.



Western blot analysis of lysates from NIH/3T3 cells using Hmox1 Rabbit pAb (A23650) at 1:1000 dilution. NIH/3T3 cells were treated by arsenite(50 µM) at 37°C for 8 hours. Secondary antibody: HRP-conjugated Goat anti-Rabbit IgG (H+L) (AS014) at 1:10000 dilution. Lysates/proteins: 25 µg per lane. Blocking buffer: 3% nonfat dry milk in TBST. Detection: ECL Basic Kit (RM00020). Exposure time: 1s.



Immunofluorescence analysis of Rat spleen tissue using Hmox1 Rabbit pAb (A23650) at a dilution of 1:100 (40x lens). Secondary antibody: Cy3-conjugated Goat anti-Rabbit IgG (H+L)(AS007) at 1:500 dilution. Blue: DAPI for nuclear staining. High pressure antigen retrieval performed with 0.01M Citrate Buffer(pH 6.0) prior to IF staining.



Immunohistochemistry analysis of paraffin-embedded Rat spleen tissue using Hmox1 Rabbit pAb (A23650) at a dilution of 1:200 (40x lens). High pressure antigen retrieval performed with 0.01M Citrate Bufferr (pH 6.0) prior to IHC staining.