

CD119 Rabbit pAb

Catalog No.: A23652

Basic Information

Observed MW

70-95kDa

Calculated MW

52kDa

Category

Primary antibody

Applications

WB, ELISA

Cross-Reactivity

Mouse

Background

Predicted to enable cytokine receptor activity. Involved in several processes, including astrocyte activation; negative regulation of amyloid-beta clearance; and positive regulation of macromolecule metabolic process. Acts upstream of or within defense response to virus. Predicted to be located in several cellular components, including dendrite; endoplasmic reticulum; and postsynaptic density. Predicted to be integral component of plasma membrane. Is expressed in several structures, including alimentary system; cerebral cortex; cranium; female reproductive system; and liver. Used to study osteoporosis. Human ortholog(s) of this gene implicated in asthma; hepatitis B; immunodeficiency 27A; immunodeficiency 27B; and tuberculosis. Orthologous to human IFNGR1 (interferon gamma receptor 1).

Recommended Dilutions

WB 1:1000 - 1:5000

ELISA Recommended starting concentration is 1 µg/mL. Please optimize the concentration based on your specific assay requirements.

Immunogen Information

Gene ID

15979

Swiss Prot

P15261

Immunogen

Recombinant protein (or fragment). This information is considered to be commercially sensitive.

Synonyms

Ifgr; CD119; Ifngr; Nktar; IFN-gammaR

Contact

☎ | 400-999-6126

✉ | cn.market@abclonal.com.cn

🌐 | www.abclonal.com.cn

Product Information

Source

Rabbit

Isotype

IgG

Purification

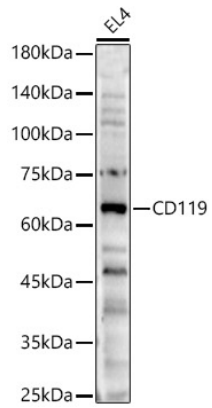
Affinity purification

Storage

Store at -20°C. Avoid freeze / thaw cycles.

Buffer: PBS containing 50% glycerol, preserved with proclin300 or sodium azide (as specified on the Certificate of Analysis), pH 7.3.

Validation Data



Western blot analysis of lysates from EL4 cells, using CD119 Rabbit pAb (A23652) at 1:3000 dilution.
Secondary antibody: HRP-conjugated Goat anti-Rabbit IgG (H+L) (AS014) at 1:10000 dilution.
Lysates/proteins: 25µg per lane.
Blocking buffer: 3% nonfat dry milk in TBST.
Detection: ECL Basic Kit (RM00020).
Exposure time: 90s.