

CD335 Rabbit pAb

Catalog No.: A23655

Basic Information

Observed MW

46kDa

Calculated MW

37kDa

Category

Primary antibody

Applications

ELISA, WB

Cross-Reactivity

Mouse

Background

Acts upstream of or within defense response to virus and detection of virus. Located in cell surface. Orthologous to human NCR1 (natural cytotoxicity triggering receptor 1).

Recommended Dilutions

WB 1:500 - 1:1000

Immunogen Information

Gene ID

17086

Swiss Prot

Q8C567

Immunogen

Recombinant fusion protein containing a sequence corresponding to amino acids 17-255 of mouse CD335. (NP_034876.2).

Synonyms

Ly94; NKp46; CD335

Contact

☎ | 400-999-6126

✉ | cn.market@abclonal.com.cn

🌐 | www.abclonal.com.cn

Product Information

Source

Rabbit

Isotype

IgG

Purification

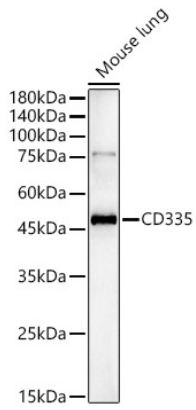
Affinity purification

Storage

Store at -20°C. Avoid freeze / thaw cycles.

Buffer: PBS with 0.05% proclin300, 50% glycerol, pH7.3.

Validation Data



Western blot analysis of lysates from Mouse lung, using CD335 Rabbit pAb (A23655) at 1:500 dilution.
Secondary antibody: HRP Goat Anti-Rabbit IgG (H+L) (AS014) at 1:10000 dilution.
Lysates/proteins: 25ug per lane.
Blocking buffer: 3% nonfat dry milk in TBST.
Detection: ECL Enhanced Kit (RM00021).
Exposure time: 180s.