

# MAPT Rabbit pAb

Catalog No.: A23656

## Basic Information

### Observed MW

### Calculated MW

38kDa

### Category

Primary antibody

### Applications

ELISA, WB, IF/ICC

### Cross-Reactivity

Human, Mouse, Rat

## Background

Enables DNA binding activity; microtubule binding activity; and protein kinase binding activity. Involved in negative regulation of tubulin deacetylation; regulation of cellular response to heat; and regulation of response to DNA damage stimulus. Acts upstream of or within several processes, including adult walking behavior; generation of neurons; and transport along microtubule. Located in several cellular components, including cytoskeleton; glial cell projection; and postsynaptic density. Is expressed in several structures, including gut; nervous system; sensory organ; smooth muscle tissue; and urinary system. Used to study Alzheimer's disease. Human ortholog(s) of this gene implicated in dementia (multiple); neurodegenerative disease (multiple); progressive supranuclear palsy; and temporal lobe epilepsy. Orthologous to human MAPT (microtubule associated protein tau).

## Recommended Dilutions

WB 1:500 - 1:1000

IF/ICC 1:50 - 1:200

## Immunogen Information

### Gene ID

17762

### Swiss Prot

P10637-5

### Immunogen

Recombinant fusion protein containing a sequence corresponding to amino acids 3-214 of mouse MAPT. (NP\_034968.3).

### Synonyms

Tau; Mtapt; PHF-tau; MAPT

## Contact

☎ | 400-999-6126

✉ | [cn.market@abclonal.com.cn](mailto:cn.market@abclonal.com.cn)

🌐 | [www.abclonal.com.cn](http://www.abclonal.com.cn)

## Product Information

### Source

Rabbit

### Isotype

IgG

### Purification

Affinity purification

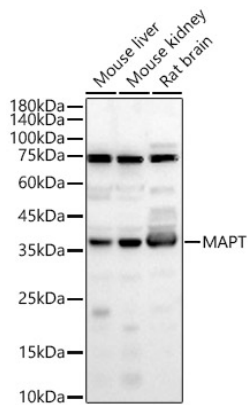
### Storage

Store at -20°C. Avoid freeze / thaw cycles.

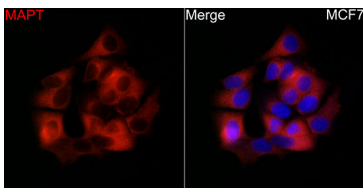
Buffer: PBS with 0.05% proclin300, 50% glycerol, pH7.3.

## Validation Data

---



Western blot analysis of various lysates, using MAPT Rabbit pAb (A23656) at 1:900 dilution.  
Secondary antibody: HRP Goat Anti-Rabbit IgG (H+L) (AS014) at 1:10000 dilution.  
Lysates/proteins: 25ug per lane.  
Blocking buffer: 3% nonfat dry milk in TBST.  
Detection: ECL Basic Kit (RM00020).  
Exposure time: 60s.



Immunofluorescence analysis of MCF7 cells using MAPT Rabbit pAb(A23656) at a dilution of 1:50 (40x lens). Secondary antibody: Cy3 Goat Anti-Rabbit IgG (H+L)(AS007) at 1:500 dilution. Blue: DAPI for nuclear staining.