

# CD112 Rabbit pAb

Catalog No.: A23657

## Basic Information

### Observed MW

65-85kDa

### Calculated MW

57kDa

### Category

Primary antibody

### Applications

ELISA, WB

### Cross-Reactivity

Human, Mouse

## Background

Enables cell adhesion molecule binding activity and protein homodimerization activity. Involved in homophilic cell adhesion via plasma membrane adhesion molecules. Acts upstream of or within several processes, including establishment of mitochondrion localization; sperm mitochondrion organization; and spermatid development. Located in cell-cell contact zone; plasma membrane; and zonula adherens. Is expressed in brain; cochlea; enamel organ; male reproductive system; and primitive collecting duct. Human ortholog(s) of this gene implicated in Alzheimer's disease and multiple sclerosis. Orthologous to human NECTIN2 (nectin cell adhesion molecule 2).

## Recommended Dilutions

WB 1:1000 - 1:5000

## Immunogen Information

### Gene ID

19294

### Swiss Prot

P32507

### Immunogen

Recombinant fusion protein containing a sequence corresponding to amino acids 32-345 of mouse CD112. (NP\_033016.3).

### Synonyms

MPH; Pvr; Pvs; Cd112; Pvr12; nectin-2; CD112

## Contact

☎ | 400-999-6126

✉ | [cn.market@abclonal.com.cn](mailto:cn.market@abclonal.com.cn)

🌐 | [www.abclonal.com.cn](http://www.abclonal.com.cn)

## Product Information

### Source

Rabbit

### Isotype

IgG

### Purification

Affinity purification

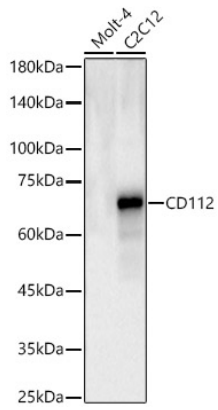
### Storage

Store at -20°C. Avoid freeze / thaw cycles.

Buffer: PBS with 0.05% proclin300, 50% glycerol, pH7.3.

## Validation Data

---



Western blot analysis of various lysates, using CD112 Rabbit pAb (A23657) at 1:2000 dilution.  
Secondary antibody: HRP Goat Anti-Rabbit IgG (H+L) (AS014) at 1:10000 dilution.  
Lysates/proteins: 25µg per lane.  
Blocking buffer: 3% nonfat dry milk in TBST.  
Detection: ECL Basic Kit (RM00020).  
Exposure time: 90s.