

Osteopontin/OPN/SPP1 Rabbit pAb

Catalog No.: A23658 **1 Publications**

Basic Information

Observed MW

58-75kDa

Calculated MW

32kDa

Category

Primary antibody

Applications

ELISA, WB, IF/ICC

Cross-Reactivity

Mouse

Background

Enables extracellular matrix binding activity. Acts upstream of or within several processes, including cellular ion homeostasis; cellular response to leukemia inhibitory factor; and neutrophil chemotaxis. Located in apical part of cell and cytoplasm. Is expressed in several structures, including alimentary system; brain; metanephros; reproductive system; and skeleton. Human ortholog(s) of this gene implicated in several diseases, including autoimmune disease (multiple); biliary atresia; coronary artery disease (multiple); disease of cellular proliferation (multiple); and hepatitis. Orthologous to human SPP1 (secreted phosphoprotein 1).

Recommended Dilutions

WB 1:500 - 1:1000

IF/ICC 1:50 - 1:200

Immunogen Information

Gene ID

20750

Swiss Prot

P10923

Immunogen

Recombinant fusion protein containing a sequence corresponding to amino acids 17-294 of mouse osteopontin/OPN/SPP1 (NP_001191162.1).

Synonyms

OP; 2AR; Bsp; Eta; Opn; Ric; BNSP; BSPI; Opnl; Apl-1; ETA-1; Spp-1; Osteopontin/OPN/SPP1

Contact

 | 400-999-6126 | cn.market@abclonal.com.cn | www.abclonal.com.cn

Product Information

Source

Rabbit

Isotype

IgG

Purification

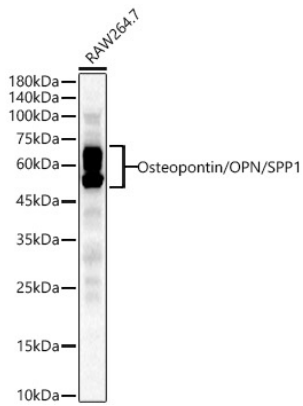
Affinity purification

Storage

Store at -20°C. Avoid freeze / thaw cycles.

Buffer: PBS with 0.05% proclin300, 50% glycerol, pH7.3.

Validation Data



Western blot analysis of lysates from RAW264.7 cells, using Osteopontin/OPN/SPP1 Rabbit pAb (A23658) at 1:700 dilution.

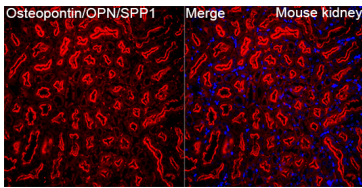
Secondary antibody: HRP Goat Anti-Rabbit IgG (H+L) (AS014) at 1:10000 dilution.

Lysates/proteins: 25µg per lane.

Blocking buffer: 3% nonfat dry milk in TBST.

Detection: ECL Basic Kit (RM00020).

Exposure time: 180s.



Immunofluorescence analysis of paraffin-embedded Mouse kidney tissue using Osteopontin/OPN/SPP1 Rabbit pAb (A23658) at a dilution of 1:100 (40x lens). Secondary antibody: Cy3 Goat Anti-Rabbit IgG (H+L) (AS007) at 1:500 dilution. Blue: DAPI for nuclear staining. Perform high pressure antigen retrieval with 0.01 M citrate buffer (pH 6.0) prior to IF staining.