

Chek2 Rabbit pAb

Catalog No.: A23664

Basic Information

Observed MW

62-68kDa

Calculated MW

61kDa

Category

Primary antibody

Applications

ELISA, WB

Cross-Reactivity

Human, Mouse

Background

Enables protein kinase activity. Acts upstream of or within cellular response to gamma radiation; peptidyl-serine phosphorylation; and signal transduction by p53 class mediator. Predicted to be located in Golgi apparatus and PML body. Predicted to be active in cytoplasm and nucleus. Predicted to colocalize with chromosome, telomeric region. Is expressed in several structures, including central nervous system; genitourinary system; and liver. Human ortholog(s) of this gene implicated in several diseases, including Li-Fraumeni syndrome 2; breast cancer (multiple); colorectal cancer; osteosarcoma; and prostate cancer. Orthologous to human CHEK2 (checkpoint kinase 2).

Recommended Dilutions

WB 1:1000 - 1:5000

Immunogen Information

Gene ID

50883

Swiss Prot

Q9Z265

Immunogen

Recombinant protein of human Chek2.

Synonyms

CHK2; Cds1; Rad53; HUCDS1; Chek2

Contact

☎ | 400-999-6126

✉ | cn.market@abclonal.com.cn

🌐 | www.abclonal.com.cn

Product Information

Source

Rabbit

Isotype

IgG

Purification

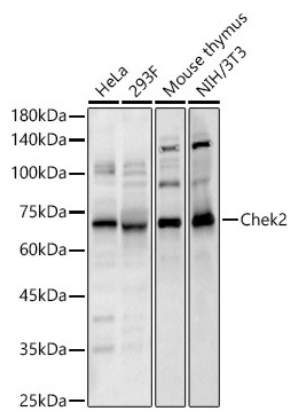
Affinity purification

Storage

Store at -20°C. Avoid freeze / thaw cycles.

Buffer: PBS with 0.05% proclin300, 50% glycerol, pH7.3.

Validation Data



Western blot analysis of various lysates, using Chek2 Rabbit pAb (A23664) at 1:3000 dilution.
Secondary antibody: HRP Goat Anti-Rabbit IgG (H+L) (AS014) at 1:10000 dilution.
Lysates/proteins: 25µg per lane.
Blocking buffer: 3% nonfat dry milk in TBST.
Detection: ECL Basic Kit (RM00020).
Exposure time: 30s.