

# IL22 Rabbit pAb

Catalog No.: A23667

## Basic Information

### Observed MW

45-50kDa

### Calculated MW

42kDa

### Category

Primary antibody

### Applications

ELISA, WB

### Cross-Reactivity

Human, Mouse, Rat

## Background

This gene encodes a member of the parvin family of actin-binding proteins. Parvins are associated with focal contacts and contain calponin homology domains that bind to actin filaments. The encoded protein is part of the integrin-linked kinase signaling complex and plays a role in cell adhesion, motility and survival.

## Recommended Dilutions

WB 1:1000 - 1:5000

## Immunogen Information

### Gene ID

55742

### Swiss Prot

Q9NVD7

### Immunogen

Recombinant fusion protein containing a sequence corresponding to amino acids 1-100 of human IL22. (NP\_060692.3).

### Synonyms

MXRA2; CH-ILKBP; IL22

## Contact

 | 400-999-6126

 | [cn.market@abclonal.com.cn](mailto:cn.market@abclonal.com.cn)

 | [www.abclonal.com.cn](http://www.abclonal.com.cn)

## Product Information

### Source

Rabbit

### Isotype

IgG

### Purification

Affinity purification

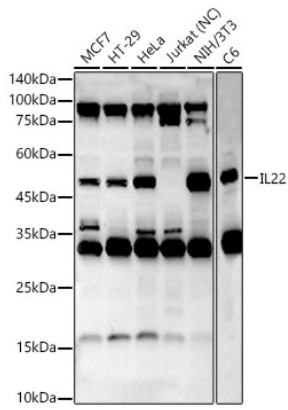
### Storage

Store at -20°C. Avoid freeze / thaw cycles.

Buffer: PBS with 0.05% proclin300, 50% glycerol, pH7.3.

## Validation Data

---



Western blot analysis of various lysates, using IL22 Rabbit pAb (A23667) at 1:3000 dilution.  
Secondary antibody: HRP Goat Anti-Rabbit IgG (H+L) (AS014) at 1:10000 dilution.  
Lysates/proteins: 25µg per lane.  
Blocking buffer: 3% nonfat dry milk in TBST.  
Detection: ECL Basic Kit (RM00020).  
Negative control (NC): Jurkat.  
Exposure time: 90s.