

TIMM29 Rabbit pAb

Catalog No.: A23671

Basic Information

Observed MW

29kDa

Calculated MW

29kDa

Category

Primary antibody

Applications

WB, ELISA

Cross-Reactivity

Human, Mouse

Background

Enables protein transporter activity. Involved in protein insertion into mitochondrial inner membrane. Located in mitochondrial inner membrane and mitochondrial intermembrane space. Part of TIM22 mitochondrial import inner membrane insertion complex.

Recommended Dilutions

WB 1:500 - 1:1000

ELISA Recommended starting concentration is 1 µg/mL. Please optimize the concentration based on your specific assay requirements.

Immunogen Information

Gene ID

90580

Swiss Prot

Q9BSF4

Immunogen

Recombinant protein (or fragment). This information is considered to be commercially sensitive.

Synonyms

TIM29; C19orf52; TIMM29

Contact

☎ | 400-999-6126

✉ | cn.market@abclonal.com.cn

🌐 | www.abclonal.com.cn

Product Information

Source

Rabbit

Isotype

IgG

Purification

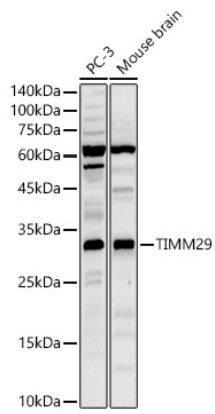
Affinity purification

Storage

Store at -20°C. Avoid freeze / thaw cycles.

Buffer: PBS containing 50% glycerol, preserved with proclin300 or sodium azide (as specified on the Certificate of Analysis), pH 7.3.

Validation Data



Western blot analysis of various lysates, using TIMM29 Rabbit pAb (A23671) at 1:500 dilution.
Secondary antibody: HRP-conjugated Goat anti-Rabbit IgG (H+L) (AS014) at 1:10000 dilution.
Lysates/proteins: 25µg per lane.
Blocking buffer: 3% nonfat dry milk in TBST.
Detection: ECL Basic Kit (RM00020).
Exposure time: 180s.