

# Ly-6A/E (Sca-1) Rabbit pAb

Catalog No.: A23672

## Basic Information

### Observed MW

15kDa

### Calculated MW

14kDa

### Category

Primary antibody

### Applications

ELISA, WB

### Cross-Reactivity

Mouse

## Background

Predicted to enable acetylcholine receptor binding activity and acetylcholine receptor inhibitor activity. Acts upstream of or within response to bacterium. Located in external side of plasma membrane. Is expressed in alimentary system; hindlimb tendon; liver; metanephros; and physiological umbilical hernia. Used to study osteoporosis. Orthologous to human LY6H (lymphocyte antigen 6 family member H).

## Recommended Dilutions

WB 1:1000 - 1:5000

## Immunogen Information

### Gene ID

110454

### Swiss Prot

P05533

### Immunogen

Recombinant fusion protein containing a sequence corresponding to amino acids 1-100 of mouse Ly6a. (NP\_034868.1).

### Synonyms

TAP; Sca1; Sca-1; Ly-6A.2; Ly-6A/E; Ly-6E.1; Ly-6A/E (Sca-1)

## Contact

☎ | 400-999-6126

✉ | [cn.market@abclonal.com.cn](mailto:cn.market@abclonal.com.cn)

🌐 | [www.abclonal.com.cn](http://www.abclonal.com.cn)

## Product Information

### Source

Rabbit

### Isotype

IgG

### Purification

Affinity purification

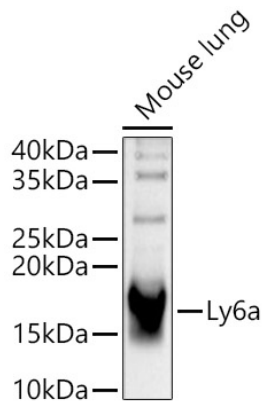
### Storage

Store at -20°C. Avoid freeze / thaw cycles.

Buffer: PBS with 0.05% proclin300, 50% glycerol, pH7.3.

## Validation Data

---



Western blot analysis of lysates from Mouse lung, using Ly6a Rabbit pAb (A23672) at 1:2000 dilution.  
Secondary antibody: HRP Goat Anti-Rabbit IgG (H+L) (AS014) at 1:10000 dilution.  
Lysates/proteins: 25µg per lane.  
Blocking buffer: 3% nonfat dry milk in TBST.  
Detection: ECL Basic Kit (RM00020).  
Exposure time: 30s.