

Lyve1 Rabbit pAb

Catalog No.: A23673

Basic Information

Observed MW

50-70kDa

Calculated MW

34kDa

Category

Primary antibody

Applications

WB, ELISA

Cross-Reactivity

Mouse, Rat

Background

Enables hyaluronic acid binding activity and transmembrane signaling receptor activity. Acts upstream of or within glycosaminoglycan catabolic process. Located in plasma membrane. Is expressed in several structures, including cardiovascular system; gut; hemolymphoid system; meninges; and metanephros. Orthologous to human LYVE1 (lymphatic vessel endothelial hyaluronan receptor 1).

Recommended Dilutions

WB 1:500 - 1:1000

ELISA Recommended starting concentration is 1 µg/mL. Please optimize the concentration based on your specific assay requirements.

Immunogen Information

Gene ID

114332

Swiss Prot

Q8BHC0

Immunogen

Recombinant protein (or fragment). This information is considered to be commercially sensitive.

Synonyms

Xlkd1; Lyve-1; Crsbp-1; 1200012G08Rik; Lyve1

Contact

☎ | 400-999-6126

✉ | cn.market@abclonal.com.cn

🌐 | www.abclonal.com.cn

Product Information

Source

Rabbit

Isotype

IgG

Purification

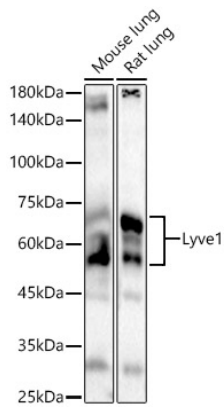
Affinity purification

Storage

Store at -20°C. Avoid freeze / thaw cycles.

Buffer: PBS containing 50% glycerol, preserved with proclin300 or sodium azide (as specified on the Certificate of Analysis), pH 7.3.

Validation Data



Western blot analysis of various lysates, using Lyve1 Rabbit pAb (A23673) at 1:1000 dilution.
Secondary antibody: HRP-conjugated Goat anti-Rabbit IgG (H+L) (AS014) at 1:10000 dilution.
Lysates/proteins: 25 μ g per lane.
Blocking buffer: 3% nonfat dry milk in TBST.
Detection: ECL Basic Kit (RM00020).
Exposure time: 60s.