

# [KD Validated] CLIC1 Rabbit pAb

Catalog No.: A23677

## Basic Information

### Observed MW

Refer to figures

### Calculated MW

27kDa

### Category

Primary antibody

### Applications

ELISA, WB, IF/ICC, IP

### Cross-Reactivity

Human, Mouse, Rat

## Background

Chloride channels are a diverse group of proteins that regulate fundamental cellular processes including stabilization of cell membrane potential, transepithelial transport, maintenance of intracellular pH, and regulation of cell volume. Chloride intracellular channel 1 is a member of the p64 family; the protein localizes principally to the cell nucleus and exhibits both nuclear and plasma membrane chloride ion channel activity.

## Recommended Dilutions

**WB** 1:500 - 1:1000

**IF/ICC** 1:50 - 1:200

**IP** 0.5µg-4µg antibody for  
200µg-400µg extracts of  
whole cells

## Immunogen Information

### Gene ID

1192

### Swiss Prot

O00299

### Immunogen

Recombinant Protein corresponding to a sequence within amino acids 42-241 of human CLIC1(NP\_001279.2).

### Synonyms

G6; CL1C1; NCC27; CLCNL1; [KD Validated] CLIC1

## Contact

☎ | 400-999-6126

✉ | [cn.market@abclonal.com.cn](mailto:cn.market@abclonal.com.cn)

🌐 | [www.abclonal.com.cn](http://www.abclonal.com.cn)

## Product Information

### Source

Rabbit

### Isotype

IgG

### Purification

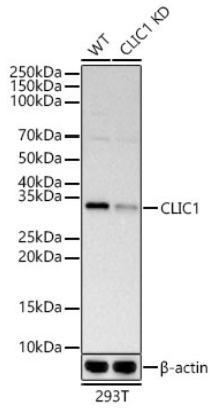
Affinity purification

### Storage

Store at -20°C. Avoid freeze / thaw cycles.

Buffer: PBS with 0.02% sodium azide, 50% glycerol, pH7.3.

## Validation Data



Western blot analysis of lysates from wild type (WT) and CLIC1 knockdown (KD) HeLa cells, using [KD Validated] CLIC1 Rabbit pAb (A23677) at 1:1000 dilution.

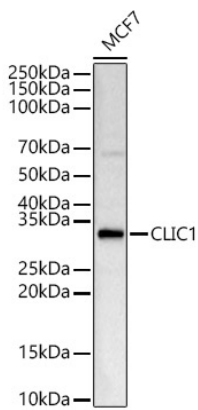
Secondary antibody: HRP Goat Anti-Rabbit IgG (H+L) (AS014) at 1:10000 dilution.

Lysates/proteins: 25µg per lane.

Blocking buffer: 3% nonfat dry milk in TBST.

Detection: ECL Basic Kit (RM00020).

Exposure time: 30s.



Western blot analysis of lysates from MCF7 cells, using [KD Validated] CLIC1 Rabbit pAb (A23677) at 1:1000 dilution.

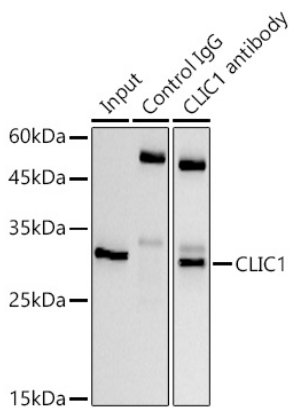
Secondary antibody: HRP Goat Anti-Rabbit IgG (H+L) (AS014) at 1:10000 dilution.

Lysates/proteins: 25µg per lane.

Blocking buffer: 3% nonfat dry milk in TBST.

Detection: ECL Basic Kit (RM00020).

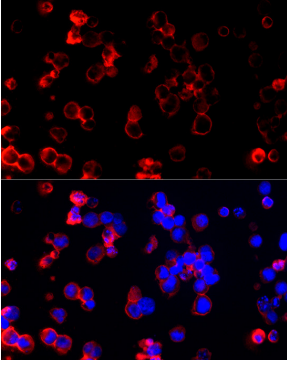
Exposure time: 30s.



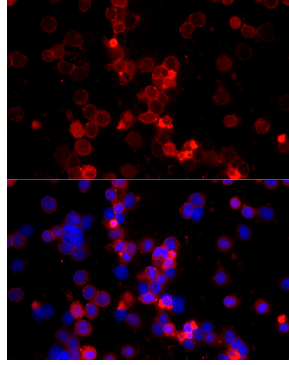
Immunoprecipitation analysis of 300 µg extracts of HeLa cells using 3 µg [KD Validated] CLIC1 Rabbit pAb (A23677). Western blot was performed from the immunoprecipitate using [KO Validated] CLIC1 Rabbit pAb (A23677) at a dilution of 1:2000.

## Validation Data

---



Immunofluorescence analysis of K-562 cells using [KD Validated] CLIC1 Rabbit pAb (A23677) at dilution of 1:200 (40x lens). Secondary antibody: Cy3 Goat Anti-Rabbit IgG (H+L) (AS007) at 1:500 dilution. Blue: DAPI for nuclear staining.



Immunofluorescence analysis of THP-1 cells using [KD Validated] CLIC1 Rabbit pAb (A23677) at dilution of 1:200 (40x lens). Secondary antibody: Cy3 Goat Anti-Rabbit IgG (H+L) (AS007) at 1:500 dilution. Blue: DAPI for nuclear staining.