

PMEL Rabbit mAb

Catalog No.: A23684 **Recombinant**

Basic Information

Observed MW

100kDa

Calculated MW

70kDa

Category

Primary antibody

Applications

ELISA,WB,IHC-P

Cross-Reactivity

Human

CloneNo number

ARC59527

Background

This gene encodes a melanocyte-specific type I transmembrane glycoprotein. The encoded protein is enriched in melanosomes, which are the melanin-producing organelles in melanocytes, and plays an essential role in the structural organization of premelanosomes. This protein is involved in generating internal matrix fibers that define the transition from Stage I to Stage II melanosomes. This protein undergoes a complex pattern of posttranslational processing and modification that is essential to the proper functioning of the protein. A secreted form of this protein that is released by proteolytic ectodomain shedding may be used as a melanoma-specific serum marker. Alternate splicing results in multiple transcript variants.

Recommended Dilutions

WB	1:500 - 1:1000
IHC-P	1:500 - 1:1000

Immunogen Information

Gene ID

6490

Swiss Prot

P40967

Immunogen

Recombinant fusion protein containing a sequence corresponding to amino acids 25-211 of human PMEL (NP_008859.1).

Synonyms

P1; SI; SIL; ME20; P100; SILV; HMB45; ME20M; gp100; HMB-45; ME20-M; PMEL17; D12S53E; PMEL

Contact

☎ | 400-999-6126

✉ | cn.market@abclonal.com.cn

🌐 | www.abclonal.com.cn

Product Information

Source

Rabbit

Isotype

IgG

Purification

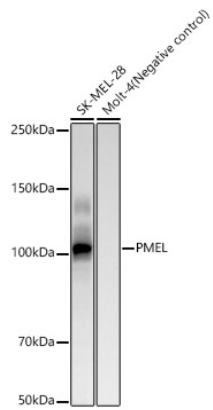
Affinity purification

Storage

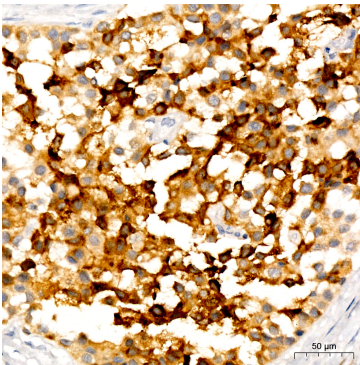
Store at -20°C. Avoid freeze / thaw cycles.

Buffer: PBS with 0.05% proclin300,0.05% BSA,50% glycerol,pH7.3.

Validation Data



Western blot analysis of various lysates, using PMEL Rabbit mAb (A23684) at 1:1000 dilution.
Secondary antibody: HRP Goat Anti-Rabbit IgG (H+L) (AS014) at 1:10000 dilution.
Lysates/proteins: 25µg per lane.
Blocking buffer: 3% nonfat dry milk in TBST.
Detection: ECL Basic Kit (RM00020).
Exposure time: 60s.



Immunohistochemistry analysis of paraffin-embedded Human malignant melanoma using PMEL Rabbit mAb (A23684) at dilution of 1:1000 (40x lens). High pressure antigen retrieval performed with 0.01M Tris/EDTA Buffer (pH 9.0) prior to IHC staining.