

CD80 Rabbit mAb

Catalog No.: A23688

Recombinant

2 Publications

Basic Information

Observed MW

50-75kDa

Calculated MW

34kDa

Category

Primary antibody

Applications

WB,FC,ELISA

Cross-Reactivity

Human, Mouse, Rat

CloneNo number

ARC61485

Background

Predicted to enable coreceptor activity. Acts upstream of or within T cell costimulation; cellular response to lipopolysaccharide; and positive regulation of alpha-beta T cell proliferation. Located in external side of plasma membrane. Is expressed in heart ventricle and skin. Human ortholog(s) of this gene implicated in type 1 diabetes mellitus. Orthologous to human CD80 (CD80 molecule).

Recommended Dilutions

WB 1:500 - 1:1000

FC 1:100 - 1:500

ELISA Recommended starting concentration is 1 µg/mL. Please optimize the concentration based on your specific assay requirements.

Immunogen Information

Gene ID

12519

Swiss Prot

Q00609

Immunogen

Recombinant fusion protein containing a sequence corresponding to amino acids 38-245 of mouse CD80(NP_033985.3)

Synonyms

B71; Ly53; TSA1; Cd28l; Ly-53; MIC17; CD80

Contact

☎ | 400-999-6126

✉ | cn.market@abclonal.com.cn

🌐 | www.abclonal.com.cn

Product Information

Source

Rabbit

Isotype

IgG

Purification

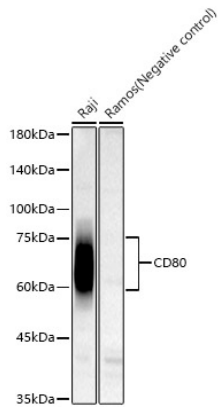
Affinity purification

Storage

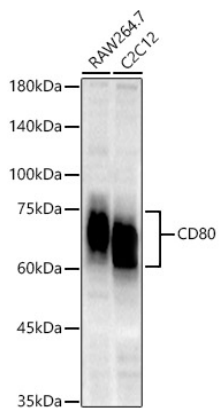
Store at -20°C. Avoid freeze / thaw cycles.

Buffer: PBS with 0.05% proclin300,0.05% BSA,50% glycerol,pH7.3.

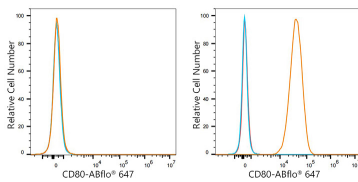
Validation Data



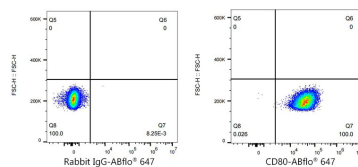
Western blot analysis of various lysates, using CD80 Rabbit mAb (A23688) at 1:1000 dilution. Secondary antibody: HRP-conjugated Goat anti-Rabbit IgG (H+L) (AS014) at 1:10000 dilution. Lysates/proteins: 25µg per lane. Blocking buffer: 3% nonfat dry milk in TBST. Detection: ECL Basic Kit (RM00020). Exposure time: 45s.



Western blot analysis of various lysates, using CD80 Rabbit mAb (A23688) at 1:1000 dilution. Secondary antibody: HRP-conjugated Goat anti-Rabbit IgG (H+L) (AS014) at 1:10000 dilution. Lysates/proteins: 25µg per lane. Blocking buffer: 3% nonfat dry milk in TBST. Detection: ECL Basic Kit (RM00020). Exposure time: 90s.



Flow cytometry: 1×10^6 Neuro-2a cells (negative control, left) and C2C12 cells (right) were surface-stained with CD80 Rabbit mAb (A23688, 2µg/mL, orange line) or ABflo® 647 Rabbit IgG isotype control (A22070, 2µg/mL, blue line). Non-fluorescently stained cells were used as blank control (red line).



Flow cytometry: 1×10^6 C2C12 cells were surface-stained with ABflo® 647 Rabbit IgG isotype control (A22070, 2 µg/mL, left) or CD80 Rabbit mAb (A23688, 2 µg/mL, right).