

Human Kappa Light Chain Rabbit mAb

Catalog No.: A23689 **Recombinant**

Basic Information

Observed MW

25kDa

Calculated MW

12kDa

Category

Primary antibody

Applications

ELISA,WB,IF/ICC,FC

Cross-Reactivity

Human

CloneNo number

ARC60646

Background

Immunoglobulins belong to a group of related glyco proteins which make up 20% of serum proteins. Antigens and immunoglobulins react to confer immunity to individuals. Immunoglobulins have similar structures of two identical heavy chains and two identical light chains. Both the heavy chains and the light chains are divided into constant and variable regions. The constant regions have the same amino acid sequences between all the immunoglobulin classes. The variable regions have approximately 110 amino acids with high sequence variability. The amino acid sequence of the heavy chain determines the class of an immunoglobulin. The five types of immunoglobulin heavy chains are known as: IgG, IgA, IgM, IgD, and IgE. IgG is divided into four subclasses, and IgA is divided into two subclasses. In serum IgA and IgG are monomers with a single 4 polypeptide unit; while, IgM is a pentamer. IgA may also form polymers. Kappa light chain antibody can be used for the identification of leukemias, plasmacytomas and certain non Hodgkin's lymphomas. Kappa light chain contains one immunoglobulin like domain.

Recommended Dilutions

WB	1:500 - 1:1000
IF/ICC	1:50 - 1:200
FC	1:500 - 1:1000

Immunogen Information

Gene ID

□

Swiss Prot

P01834

Immunogen

Recombinant fusion protein containing a sequence corresponding to amino acids 1-107 of human Kappa Light Chain(P01834).

Synonyms

Km; HCAK1; IGKCD; Human Kappa Light Chain

Contact

☎ | 400-999-6126

✉ | cn.market@abclonal.com.cn

🌐 | www.abclonal.com.cn

Product Information

Source

Rabbit

Isotype

IgG

Purification

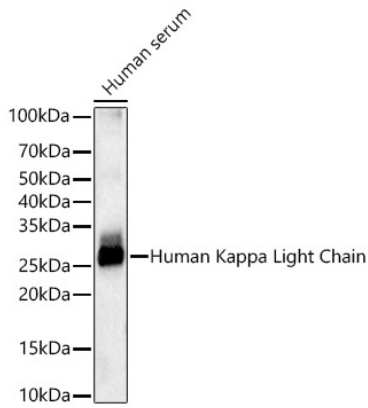
Affinity purification

Storage

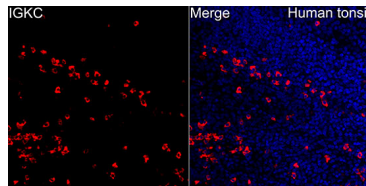
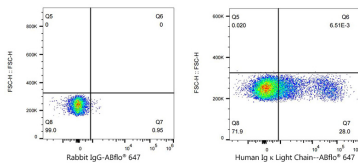
Store at -20°C. Avoid freeze / thaw cycles.

Buffer: PBS with 0.05% proclin300,0.05% BSA,50% glycerol,pH7.3.

Validation Data



Western blot analysis of lysates from Human serum, using Human Kappa Light Chain Rabbit mAb (A23689) at 1:900 dilution.
Secondary antibody: HRP Goat Anti-Rabbit IgG (H+L) (AS014) at 1:10000 dilution.
Lysates/proteins: 25µg per lane.
Blocking buffer: 3% nonfat dry milk in TBST.
Detection: ECL Basic Kit (RM00020).
Exposure time: 0.5s.



Flow cytometry: 1×10^6 Human PBMC were surface-stained with ABflo® 647 Rabbit IgG isotype control (A22070, 2 µg/mL, left) or Human Immunoglobulin kappa constant mAb (A23689, 2 µg/mL, right).

Immunofluorescence analysis of paraffin-embedded human tonsil using Human Kappa Light Chain Rabbit mAb (A23689) at dilution of 1:200 (40x lens). Secondary antibody: Cy3 Goat Anti-Rabbit IgG (H+L) (AS007) at 1:500 dilution. Blue: DAPI for nuclear staining.