

CD31/PECAM1 Rabbit mAb

Catalog No.: A23691 **Recombinant**

Basic Information

Observed MW

110-130kDa

Calculated MW

81kDa

Category

Primary antibody

Applications

ELISA,WB,FC

Cross-Reactivity

Mouse, Rat

CloneNo number

ARC61018

Background

Predicted to enable protein homodimerization activity; protein phosphatase binding activity; and transmembrane signaling receptor activity. Acts upstream of or within several processes, including Rho protein signal transduction; endothelial cell morphogenesis; and positive regulation of tyrosine phosphorylation of STAT protein. Located in several cellular components, including cell-cell contact zone; external side of plasma membrane; and smooth muscle contractile fiber. Is expressed in several structures, including alimentary system; cardiovascular system; central nervous system; extraembryonic component; and genitourinary system. Human ortholog(s) of this gene implicated in coronary artery disease (multiple); lung non-small cell carcinoma; neuroblastoma; and psoriatic arthritis. Orthologous to human PECAM1 (platelet and endothelial cell adhesion molecule 1).

Recommended Dilutions

WB	1:500 - 1:1000
FC	1:50 - 1:200

Immunogen Information

Gene ID

18613

Swiss Prot

Q08481

Immunogen

Recombinant fusion protein containing a sequence corresponding to amino acids 18-220 of mouse CD31/PECAM1(NP_001292086.1).

Synonyms

Cd31; Pecam; PECAM-1; CD31/PECAM1

Contact

☎ | 400-999-6126

✉ | cn.market@abclonal.com.cn

🌐 | www.abclonal.com.cn

Product Information

Source

Rabbit

Isotype

IgG

Purification

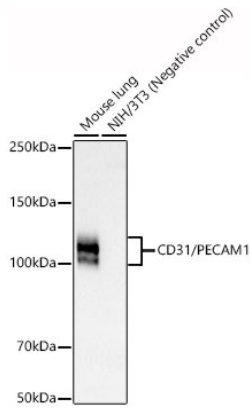
Affinity purification

Storage

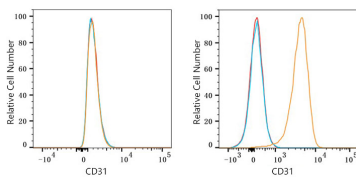
Store at -20°C. Avoid freeze / thaw cycles.

Buffer: PBS with 0.05% proclin300,0.05% BSA,50% glycerol,pH7.3.

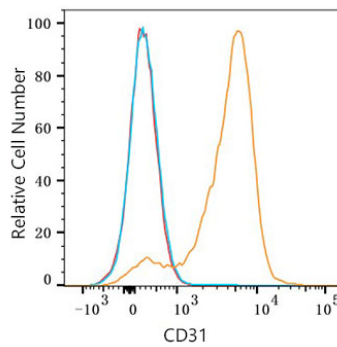
Validation Data



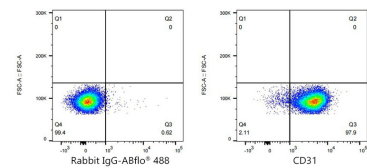
Western blot analysis of various lysates, using CD31/PECAM1 Rabbit mAb (A23691) at 1:900 dilution.
 Secondary antibody: HRP Goat Anti-Rabbit IgG (H+L) (AS014) at 1:10000 dilution.
 Lysates/proteins: 25µg per lane.
 Blocking buffer: 3% nonfat dry milk in TBST.
 Detection: ECL Basic Kit (RM00020).
 Exposure time: 180s.



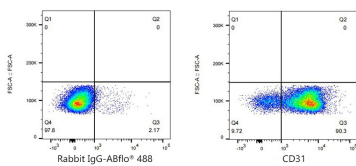
Flow cytometry: 1×10^6 NIH/3T3 cells (negative control, left) and C57BL/6 mouse Splenocytes (right) were surface-stained with CD31/PECAM1 Rabbit mAb (A23691, 2µg/mL, orange line) or ABflo® 488 Rabbit IgG isotype control (A22069, 2µg/mL, blue line). Non-fluorescently stained cells were used as blank control (red line).



Flow cytometry: 1×10^6 Rat Splenocytes were surface-stained with CD31/PECAM1 Rabbit mAb (A23691, 2 µg/mL, orange line) or ABflo® 488 Rabbit IgG isotype control (A22069, 2 µg/mL, blue line), followed by FITC conjugated goat anti-rabbit pAb (1:200 dilution) staining. Non-fluorescently stained Rat Splenocytes were used as blank control (red line).



Flow cytometry: 1×10^6 C57BL/6 mouse Splenocytes were surface-stained with ABflo® 488 Rabbit IgG isotype control (A22069, 2 µg/mL, left) or CD31/PECAM1 Rabbit mAb (A23691, 2 µg/mL, right).



Flow cytometry: 1×10^6 Rat Splenocytes were surface-stained with ABflo® 488 Rabbit IgG isotype control (A22069, 2 µg/mL, left) or CD31/PECAM1 Rabbit mAb (A23691, 2 µg/mL, right).