

TLE4 Rabbit mAb

Catalog No.: A23693 **Recombinant**

Basic Information

Observed MW

84kDa

Calculated MW

84kDa

Category

Primary antibody

Applications

ELISA, WB

Cross-Reactivity

Human, Mouse, Rat

CloneNo number

ARC61324

Background

Predicted to enable transcription corepressor activity. Predicted to be involved in negative regulation of canonical Wnt signaling pathway. Predicted to act upstream of or within Wnt signaling pathway; cellular response to leukemia inhibitory factor; and negative regulation of transcription by RNA polymerase II. Located in nucleoplasm. Part of beta-catenin-TCF complex.

Recommended Dilutions

WB 1:500 - 1:1000

Immunogen Information

Gene ID

7091

Swiss Prot

Q04727

Immunogen

Recombinant fusion protein containing a sequence corresponding to amino acids 1-138 of human TLE4 (NP_001269677).

Synonyms

ESG; BCE1; ESG4; GRG4; BCE-1; Grg-4; E(spl); E(spl); TLE4

Contact

 | 400-999-6126

 | cn.market@abclonal.com.cn

 | www.abclonal.com.cn

Product Information

Source

Rabbit

Isotype

IgG

Purification

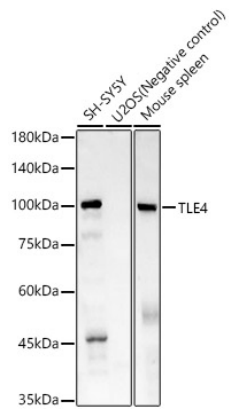
Affinity purification

Storage

Store at -20°C. Avoid freeze / thaw cycles.

Buffer: PBS with 0.05% proclin300, 0.05% BSA, 50% glycerol, pH7.3.

Validation Data



Western blot analysis of various lysates, using TLE4 Rabbit mAb (A23693) at 1:1000 dilution.
Secondary antibody: HRP Goat Anti-Rabbit IgG (H+L) (AS014) at 1:10000 dilution.
Lysates/proteins: 25µg per lane.
Blocking buffer: 3% nonfat dry milk in TBST.
Detection: ECL Basic Kit (RM00020).
Exposure time: 180s.