

CD239/BCAM Rabbit mAb

Catalog No.: A23695 **Recombinant**

Basic Information

Observed MW

85kDa/78kDa

Calculated MW

67kDa

Category

Primary antibody

Applications

WB, FC, ELISA

Cross-Reactivity

Human

CloneNo number

ARC61168

Background

This gene encodes Lutheran blood group glycoprotein, a member of the immunoglobulin superfamily and a receptor for the extracellular matrix protein, laminin. The protein contains five extracellular immunoglobulin domains, a single transmembrane domain, and a short C-terminal cytoplasmic tail. This protein may play a role in epithelial cell cancer and in vaso-occlusion of red blood cells in sickle cell disease. Polymorphisms in this gene define some of the antigens in the Lutheran system and also the Auberger system. Inactivating variants of this gene result in the recessive Lutheran null phenotype, Lu(a-b-), of the Lutheran blood group. Two transcript variants encoding different isoforms have been found for this gene.

Recommended Dilutions

WB 1:500 - 1:1000**FC** 1:100 - 1:500

ELISA Recommended starting concentration is 1 µg/mL. Please optimize the concentration based on your specific assay requirements.

Immunogen Information

Gene ID

4059

Swiss Prot

P50895

Immunogen

Recombinant protein (or fragment). This information is considered to be commercially sensitive.

Synonyms

AU; LU; CD239; MSK19; CD239/BCAM

Contact

 | 400-999-6126 | cn.market@abclonal.com.cn | www.abclonal.com.cn

Product Information

Source

Rabbit

Isotype

IgG

Purification

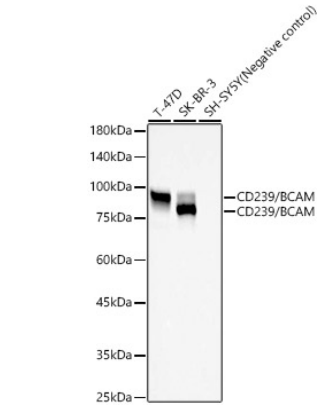
Affinity purification

Storage

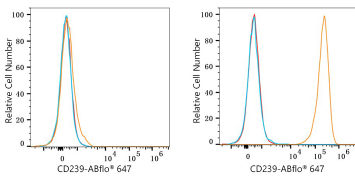
Store at -20°C. Avoid freeze / thaw cycles.

Buffer: PBS containing 50% glycerol and 0.05% BSA, preserved with proclin300 or sodium azide (as specified on the Certificate of Analysis), pH 7.3.

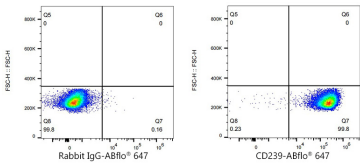
Validation Data



Western blot analysis of various lysates, using CD239/BCAM Rabbit mAb (A23695) at 1:1000 dilution. Secondary antibody: HRP-conjugated Goat anti-Rabbit IgG (H+L) (AS014) at 1:10000 dilution. Lysates/proteins: 25µg per lane. Blocking buffer: 3% nonfat dry milk in TBST. Detection: ECL Basic Kit (RM00020). Exposure time: 20s.



Flow cytometry: 1X10⁶ SH-SY5Y cells (Low Expression, left) and SK-BR-3 cells (right) were surface-stained with CD239/BCAM Rabbit mAb(A23695, 2µg/mL, orange line) or ABflo® 647 Rabbit IgG isotype control (A22070, 2µg/mL, blue line), followed by Alexa Fluor® 647 conjugated goat anti-rabbit pAb(1:200 dilution) staining. Non-fluorescently stained cells were used as blank control (red line).



Flow cytometry: 1X10⁶ SK-BR-3 cells were surface-stained with ABflo® 647 Rabbit IgG isotype control (A22070, 2 µg/mL, left) or CD239/BCAM Rabbit mAb(A23695, 2 µg/mL, right).