

# ABflo® 488 Rabbit anti-Human IgE mAb

Catalog No.: A23696

## Basic Information

### Observed MW

### Calculated MW

47kDa/54kDa/59kDa

### Category

Primary antibody

### Applications

FC

### Cross-Reactivity

Human

### CloneNo number

ARC60066

### Conjugate

ABflo® 488. Ex:491nm. Em:516nm.

## Recommended Dilutions

FC 5 µl per 10<sup>6</sup> cells in  
100 µl volume

## Background

IgE is the class of antibodies produced in the lungs, skin, and mucous membranes. It may protect against parasite invasion, but it is a major factor in allergic reactions. The antigen-specific IgE interacts with mast cells and eosinophils, triggers the release of histamine, leukotrienes and other substances that lead to the itching, sneezing and congestion of allergies - and the life threatening respiratory distress of asthma and anaphylactic shock.

## Immunogen Information

### Gene ID

3497

### Swiss Prot

P01854

### Immunogen

Recombinant protein (or fragment). This information is considered to be commercially sensitive.

### Synonyms

IgE

## Contact

 | 400-999-6126

 | [cn.market@abclonal.com.cn](mailto:cn.market@abclonal.com.cn)

 | [www.abclonal.com.cn](http://www.abclonal.com.cn)

## Product Information

### Source

Rabbit

### Isotype

IgG

### Purification

Affinity purification

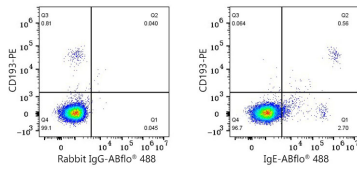
### Storage

Store at 2-8°C. Avoid freeze.

Buffer: PBS containing 0.2% BSA, preserved with proclin300 or sodium azide (as specified on the Certificate of Analysis), pH 7.3.

## Validation Data

---



Flow cytometry:  $1 \times 10^6$  Human PBMC were surface-stained with PE anti-human CD193 (CCR3) Antibody (5  $\mu$ l/Test) and ABflo® 488 Rabbit IgG isotype control (A22069, 5  $\mu$ l/Test, left) or ABflo® 488 Rabbit anti-Human IgE mAb (A23696, 5  $\mu$ l/Test, right). Cells in the lymphocyte gate were used for analysis.