

ABflo® 488 Rabbit anti-Human CD170/Siglec-5 mAb

Catalog No.: A23698

Basic Information

Observed MW

Calculated MW

61kDa

Category

Primary antibody

Applications

FC

Cross-Reactivity

Human

CloneNo number

ARC60966-ABf488

Conjugate

ABflo® 488. Ex:491nm. Em:516nm.

Recommended Dilutions

FC 5 µl per 10⁶ cells in
100 µl volume

Background

This gene encodes a member of the sialic acid-binding immunoglobulin-like lectin (Siglec) family. These cell surface lectins are characterized by structural motifs in the immunoglobulin (Ig)-like domains and sialic acid recognition sites in the first Ig V set domain. The encoded protein is a member of the CD33-related subset of Siglecs and inhibits the activation of several cell types including monocytes, macrophages and neutrophils. Binding of group B Streptococcus (GBS) to the encoded protein plays a role in GBS immune evasion.

Immunogen Information

Gene ID

8778

Swiss Prot

O15389

Immunogen

Recombinant fusion protein containing a sequence corresponding to amino acids 17-434 of human CD170/Siglec-5 (NP_003821.1).

Synonyms

CD170; OBBP2; CD33L2; OB-BP2; SIGLEC-5

Contact

☎ | 400-999-6126

✉ | cn.market@abclonal.com.cn

🌐 | www.abclonal.com.cn

Product Information

Source

Rabbit

Isotype

IgG

Purification

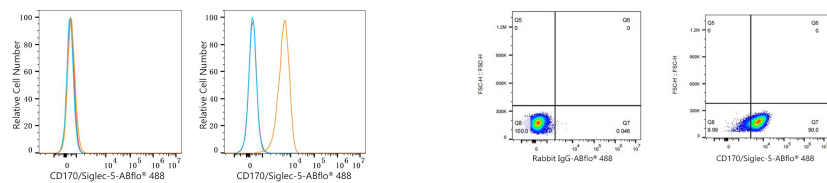
Affinity purification

Storage

Store at 2-8°C. Avoid freeze.

Buffer: PBS with 0.03% proclin300,0.2% BSA,pH7.3.

Validation Data



Flow cytometry: 1×10^6 K562 cells (negative control, left) and U937 cells (right) were surface-stained with ABflo® 488 Rabbit anti-Human CD170/Siglec-5 mAb (A23698, 5 μ l/Test, orange line) or ABflo® 488 Rabbit IgG isotype control (A22069, 5 μ l/Test, blue line). Non-fluorescently stained cells were used as blank control (red line).

Flow cytometry: 1×10^6 U937 cells were surface-stained with ABflo® 488 Rabbit IgG isotype control (A22069, 5 μ l/Test, left) or ABflo® 488 Rabbit anti-Human CD170/Siglec-5 mAb (A23698, 5 μ l/Test, right).