

# MonoMethyl-Histone H4-K20 Rabbit pAb

Catalog No.: A2370 **5 Publications**

## Basic Information

### Observed MW

11kDa

### Calculated MW

11kDa

### Category

Primary antibody

### Applications

WB,DB,IHC-P,IF/ICC,ELISA

### Cross-Reactivity

Human, Mouse, Rat, Other (Wide Range Predicted)

## Background

Histones are basic nuclear proteins that are responsible for the nucleosome structure of the chromosomal fiber in eukaryotes. This structure consists of approximately 146 bp of DNA wrapped around a nucleosome, an octamer composed of pairs of each of the four core histones (H2A, H2B, H3, and H4). The chromatin fiber is further compacted through the interaction of a linker histone, H1, with the DNA between the nucleosomes to form higher order chromatin structures. This gene is intronless and encodes a replication-dependent histone that is a member of the histone H4 family. Transcripts from this gene lack polyA tails; instead, they contain a palindromic termination element. This gene is found in a histone cluster on chromosome 1. This gene is one of four histone genes in the cluster that are duplicated; this record represents the centromeric copy.


## Recommended Dilutions

<b>WB</b>	1:500 - 1:1000
<b>DB</b>	1:500 - 1:2000
<b>IHC-P</b>	1:50 - 1:200
<b>IF/ICC</b>	1:50 - 1:200
<b>ELISA</b>	Recommended starting concentration is 1 µg/mL. Please optimize the concentration based on your specific assay requirements.

## Contact

 | 400-999-6126

 | [cn.market@abclonal.com.cn](mailto:cn.market@abclonal.com.cn)

 | [www.abclonal.com.cn](http://www.abclonal.com.cn)

## Immunogen Information

### Gene ID

8359

### Swiss Prot

P62805

### Immunogen

A synthetic monomethylated peptide around K20 of human Histone H4 (NP\_003529.1).

### Synonyms

H4; H4/n; H4C1; H4C2; H4C3; H4C4; H4C5; H4C6; H4C8; H4C9; H4F2; H4FN; FO108; H4-16; H4C11; H4C12; H4C13; H4C15; H4C16; HIST2H4; HIST2H4A; MonoMethyl-Histone H4-K20

## Product Information

### Source

Rabbit

### Isotype

IgG

### Purification

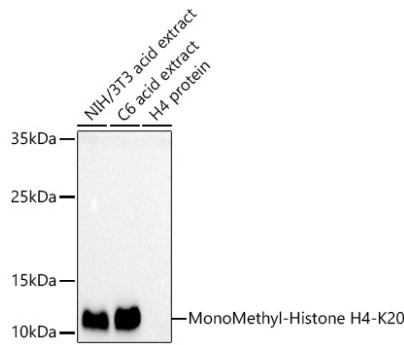
Affinity purification

### Storage

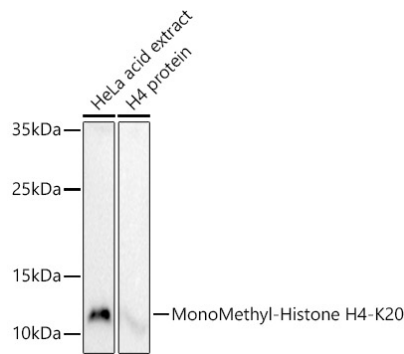
Store at -20°C. Avoid freeze / thaw cycles.

Buffer: PBS with 0.02% sodium azide,50% glycerol,pH7.3.

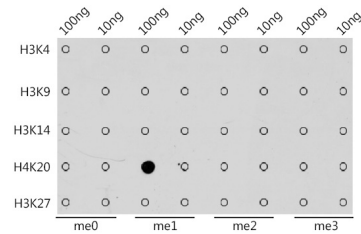
## Validation Data



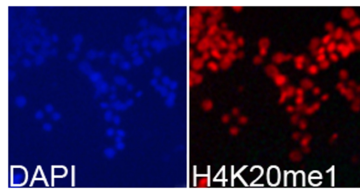
Western blot analysis of various lysates using MonoMethyl-Histone H4-K20 Rabbit pAb (A2370) at 1:1000 dilution.  
 Secondary antibody: HRP-conjugated Goat anti-Rabbit IgG (H+L) (AS014) at 1:10000 dilution.  
 Lysates/proteins: 25µg per lane.  
 Blocking buffer: 3% nonfat dry milk in TBST.  
 Detection: ECL Basic Kit (RM00020).  
 Exposure time: 10s.



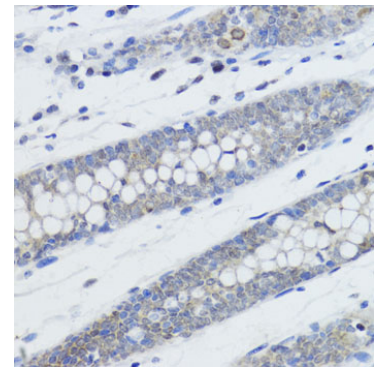
Western blot analysis of various lysates using MonoMethyl-Histone H4-K20 Rabbit pAb (A2370) at 1:1000 dilution.  
 Secondary antibody: HRP-conjugated Goat anti-Rabbit IgG (H+L) (AS014) at 1:10000 dilution.  
 Lysates/proteins: 25µg per lane.  
 Blocking buffer: 3% nonfat dry milk in TBST.  
 Detection: ECL Basic Kit (RM00020).  
 Exposure time: 90s.



Dot-blot analysis of all sorts of methylation peptides using MonoMethyl-Histone H4-K20 antibody (A2370).



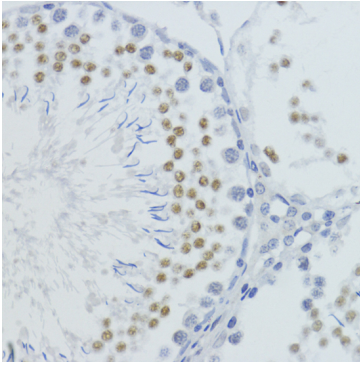
Immunofluorescence analysis of 293T cells using MonoMethyl-Histone H4-K20 Rabbit pAb (A2370). Blue: DAPI for nuclear staining.



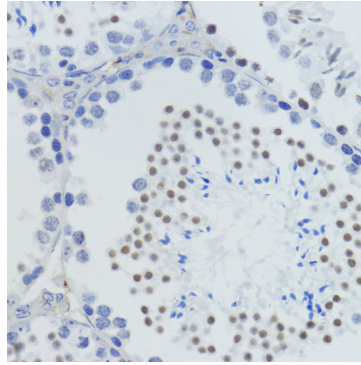
Immunohistochemistry analysis of paraffin-embedded Human colon using MonoMethyl-Histone H4-K20 Rabbit pAb (A2370) at dilution of 1:200 (40x lens). Microwave antigen retrieval performed with 0.01M PBS Buffer (pH 7.2) prior to IHC staining.

## Validation Data

---



Immunohistochemistry analysis of paraffin-embedded Rat testis using MonoMethyl-Histone H4-K20 Rabbit pAb (A2370) at dilution of 1:200 (40x lens). Microwave antigen retrieval performed with 0.01M PBS Buffer (pH 7.2) prior to IHC staining.



Immunohistochemistry analysis of paraffin-embedded Mouse testis using MonoMethyl-Histone H4-K20 Rabbit pAb (A2370) at dilution of 1:200 (40x lens). Microwave antigen retrieval performed with 0.01M PBS Buffer (pH 7.2) prior to IHC staining.