

ABflo® 647 Rabbit anti-Mouse CD31 mAb

Catalog No.: A23702

Basic Information

Observed MW

Refer to figures

Calculated MW

69kDa/77kDa/80kDa/81kDa

Category

Primary antibody

Applications

FC

Cross-Reactivity

Mouse

CloneNo number

ARC61018

Conjugate

ABflo® 647. Ex:648nm. Em:664nm.

Recommended Dilutions

FC 5 µl per 10⁶ cells in
100 µl volume

Background

Predicted to enable protein homodimerization activity; protein phosphatase binding activity; and transmembrane signaling receptor activity. Acts upstream of or within several processes, including Rho protein signal transduction; endothelial cell morphogenesis; and positive regulation of tyrosine phosphorylation of STAT protein. Located in several cellular components, including cell-cell contact zone; external side of plasma membrane; and smooth muscle contractile fiber. Is expressed in several structures, including alimentary system; cardiovascular system; central nervous system; extraembryonic component; and genitourinary system. Human ortholog(s) of this gene implicated in coronary artery disease (multiple); lung non-small cell carcinoma; neuroblastoma; and psoriatic arthritis. Orthologous to human PECAM1 (platelet and endothelial cell adhesion molecule 1).

Immunogen Information

Gene ID

18613

Swiss Prot

Q08481

Immunogen

Recombinant protein (or fragment). This information is considered to be commercially sensitive.

Synonyms

Cd31; Pecam; PECAM-1

Contact

☎ | 400-999-6126

✉ | cn.market@abclonal.com.cn

🌐 | www.abclonal.com.cn

Product Information

Source

Rabbit

Isotype

IgG

Purification

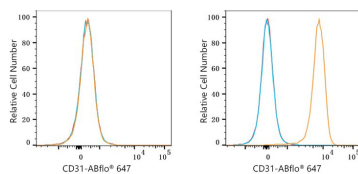
Affinity purification

Storage

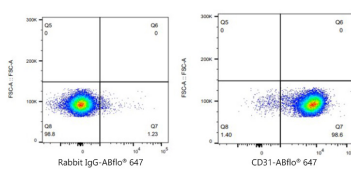
Store at 2-8°C. Avoid freeze.

Buffer: PBS containing 0.2% BSA, preserved with proclin300 or sodium azide (as specified on the Certificate of Analysis), pH 7.3.

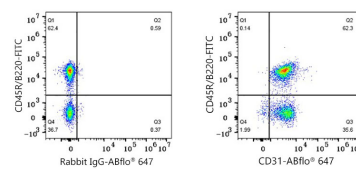
Validation Data



Flow cytometry: 1×10^6 NIH/3T3 cells (negative control, left) and C57BL/6 mouse Splenocytes (right) were surface-stained with ABflo® 647 Rabbit anti-Mouse CD31 mAb (A23702, 5 μ l/Test, orange line) or ABflo® 647 Rabbit IgG isotype control (A22070, 5 μ l/Test, blue line). Non-fluorescently stained cells were used as blank control (red line).



Flow cytometry: 1×10^6 C57BL/6 mouse Splenocytes cells were surface-stained with ABflo® 647 Rabbit IgG isotype control (A22070, 5 μ l/Test, left) or ABflo® 647 Rabbit anti-Mouse CD31 mAb (A23702, 5 μ l/Test, right).



Flow cytometry: 1×10^6 C57BL/6 mouse splenocytes were surface-stained with FITC anti-Mouse/Human CD45R/B220 mAb (A25655, 5 μ l/Test) and ABflo® 647 Rabbit IgG isotype control (A22070, 5 μ l/Test, left) or ABflo® 647 Rabbit anti-Mouse CD31 mAb (A23702, 5 μ l/Test, right). Cells in the lymphocyte gate were used for analysis.