

ABflo® 594 Rabbit anti-Mouse CD31 mAb

Catalog No.: A23703

Basic Information

Observed MW

Calculated MW

69kDa/77kDa/80kDa/81kDa

Category

Primary antibody

Applications

FC

Cross-Reactivity

Mouse

CloneNo number

ARC61018-ABf594

Conjugate

ABflo® 594. Ex:588nm. Em:604nm.

Recommended Dilutions

FC 5 µl per 10⁶ cells in
100 µl volume

Background

Predicted to enable protein homodimerization activity; protein phosphatase binding activity; and transmembrane signaling receptor activity. Acts upstream of or within several processes, including Rho protein signal transduction; endothelial cell morphogenesis; and positive regulation of tyrosine phosphorylation of STAT protein. Located in several cellular components, including cell-cell contact zone; external side of plasma membrane; and smooth muscle contractile fiber. Is expressed in several structures, including alimentary system; cardiovascular system; central nervous system; extraembryonic component; and genitourinary system. Human ortholog(s) of this gene implicated in coronary artery disease (multiple); lung non-small cell carcinoma; neuroblastoma; and psoriatic arthritis. Orthologous to human PECAM1 (platelet and endothelial cell adhesion molecule 1).

Immunogen Information

Gene ID

18613

Swiss Prot

Q08481

Immunogen

Recombinant fusion protein containing a sequence corresponding to amino acids 18-220 of mouse CD31 (NP_001292086.1).

Synonyms

Cd31; Pecam; PECAM-1

Contact

☎ | 400-999-6126

✉ | cn.market@abclonal.com.cn

🌐 | www.abclonal.com.cn

Product Information

Source

Rabbit

Isotype

IgG

Purification

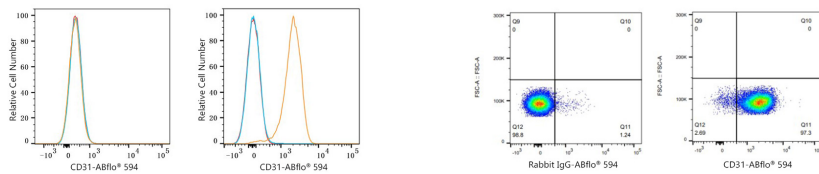
Affinity purification

Storage

Store at 2-8°C. Avoid freeze.

Buffer: PBS with 0.03% proclin300,0.2% BSA,pH7.3.

Validation Data



Flow cytometry: 1×10^6 NIH/3T3 cells (negative control, left) and C57BL/6 mouse Splenocytes (right) were surface-stained with ABflo® 594 Rabbit anti-Mouse CD31 mAb (A23703, 5 μ l/Test, orange line) or ABflo® 594 Rabbit IgG isotype control (A23821, 5 μ l/Test, blue line). Non-fluorescently stained cells were used as blank control (red line).

Flow cytometry: 1×10^6 C57BL/6 mouse Splenocytes were surface-stained with ABflo® 594 Rabbit IgG isotype control (5 μ l/Test, left) or ABflo® 594 Rabbit anti-Mouse CD31 mAb (A23703, 5 μ l/Test, right).