

# ABflo® 647 Rabbit anti-Mouse CD2 mAb

Catalog No.: A23705

## Basic Information

### Observed MW

### Calculated MW

38kDa

### Category

Primary antibody

### Applications

FC

### Cross-Reactivity

Mouse

### CloneNo number

ARC60614-ABf647

### Conjugate

ABflo® 647. Ex:648nm. Em:664nm.

## Recommended Dilutions

FC 5 µl per 10<sup>6</sup> cells in  
100 µl volume

## Background

Enables identical protein binding activity. Predicted to be involved in T cell activation; heterotypic cell-cell adhesion; and positive regulation of cytokine production. Located in several cellular components, including cell-cell junction; cytoplasmic side of plasma membrane; and external side of plasma membrane. Is anchored component of plasma membrane. Is expressed in several structures, including alimentary system; central nervous system; genitourinary system; hemolymphoid system gland; and liver and biliary system. Orthologous to human CD2 (CD2 molecule).

## Immunogen Information

### Gene ID

12481

### Swiss Prot

P08920

### Immunogen

Recombinant fusion protein containing a sequence corresponding to amino acids 23-203 of mouse CD2 (NP\_038514.1).

### Synonyms

Ly37; LFA-2; Ly-37

## Contact

☎ | 400-999-6126

✉ | [cn.market@abclonal.com.cn](mailto:cn.market@abclonal.com.cn)

🌐 | [www.abclonal.com.cn](http://www.abclonal.com.cn)

## Product Information

### Source

Rabbit

### Isotype

IgG

### Purification

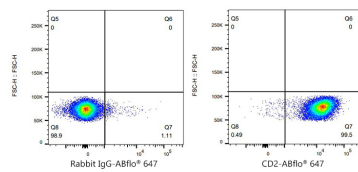
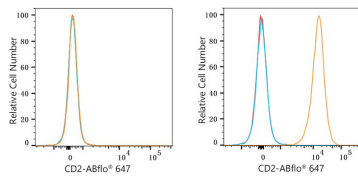
Affinity purification

### Storage

Store at 2-8°C. Avoid freeze.

Buffer: PBS with 0.03% proclin300,0.2% BSA,pH7.3.

## Validation Data



Flow cytometry: 1X10<sup>6</sup> 4T1 cells (negative control, left) and C57BL/6 mouse Splenocytes (right) were surface-stained with ABflo® 647 Rabbit anti-Mouse CD2 mAb (A23705, 5 µl/Test, orange line) or ABflo® 647 Rabbit IgG isotype control (A22070, 5 µl/Test, blue line). Non-fluorescently stained cells were used as blank control (red line).

Flow cytometry: 1X10<sup>6</sup> C57BL/6 mouse Splenocytes were surface-stained with ABflo® 647 Rabbit IgG isotype control (A22070, 5 µl/Test, left) or ABflo® 647 Rabbit anti-Mouse CD2 mAb (A23705, 5 µl/Test, right).