

ABflo® 594 Rabbit anti-Mouse CD2 mAb

Catalog No.: A23706

Basic Information

Observed MW

Calculated MW

38kDa

Category

Primary antibody

Applications

FC

Cross-Reactivity

Mouse

CloneNo number

ARC60614

Conjugate

ABflo® 594. Ex:588nm. Em:604nm.

Recommended Dilutions

FC 5 µl per 10⁶ cells in
100 µl volume

Background

Enables identical protein binding activity. Predicted to be involved in T cell activation; heterotypic cell-cell adhesion; and positive regulation of cytokine production. Located in several cellular components, including cell-cell junction; cytoplasmic side of plasma membrane; and external side of plasma membrane. Is anchored component of plasma membrane. Is expressed in several structures, including alimentary system; central nervous system; genitourinary system; hemolymphoid system gland; and liver and biliary system. Orthologous to human CD2 (CD2 molecule).

Immunogen Information

Gene ID

12481

Swiss Prot

P08920

Immunogen

Recombinant protein (or fragment). This information is considered to be commercially sensitive.

Synonyms

Ly37; LFA-2; Ly-37

Contact

☎ | 400-999-6126

✉ | cn.market@abclonal.com.cn

🌐 | www.abclonal.com.cn

Product Information

Source

Rabbit

Isotype

IgG

Purification

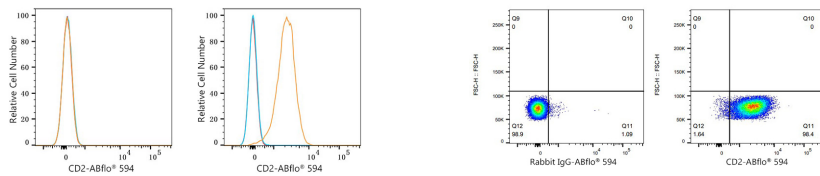
Affinity purification

Storage

Store at 2-8°C. Avoid freeze.

Buffer: PBS containing 0.2% BSA, preserved with proclin300 or sodium azide (as specified on the Certificate of Analysis), pH 7.3.

Validation Data



Flow cytometry: 1×10^6 4T1 cells (negative control, left) and C57BL/6 mouse Splenocytes (right) were surface-stained with ABflo® 594 Rabbit anti-Mouse CD2 mAb (A23706, 5 μ l/Test, orange line) or ABflo® 594 Rabbit IgG isotype control (A23821, 5 μ l/Test, blue line). Non-fluorescently stained cells were used as blank control (red line).

Flow cytometry: 1×10^6 C57BL/6 mouse Splenocytes were surface-stained with ABflo® 594 Rabbit IgG isotype control (5 μ l/Test, left) or ABflo® 594 Rabbit anti-Mouse CD2 mAb (A23706, 5 μ l/Test, right).