

# ABflo® 488 Rabbit anti-Mouse CD45 mAb

Catalog No.: A23707

## Basic Information

### Observed MW

### Calculated MW

144kDa

### Category

Primary antibody

### Applications

IF/ICC,FC

### Cross-Reactivity

Mouse

### CloneNo number

ARC60962-ABf488

### Conjugate

ABflo® 488. Ex:491nm. Em:516nm.

## Recommended Dilutions

IF/ICC 1:50 - 1:200

FC 5 µl per 10<sup>6</sup> cells in  
100 µl volume

## Background

Enables several functions, including heparan sulfate proteoglycan binding activity; heparin binding activity; and protein tyrosine phosphatase activity. Involved in several processes, including lymphocyte differentiation; positive regulation of macromolecule metabolic process; and regulation of signal transduction. Acts upstream of or within several processes, including lymphocyte differentiation; positive regulation of lymphocyte activation; and regulation of protein phosphorylation. Located in external side of plasma membrane; focal adhesion; and membrane raft. Is expressed in several structures, including 3rd branchial arch; alimentary system; cardiovascular system; hemolymphoid system; and placenta. Used to study systemic lupus erythematosus. Human ortholog(s) of this gene implicated in hepatitis C; multiple sclerosis; severe combined immunodeficiency; and severe combined immunodeficiency, autosomal recessive, T cell-negative, B cell-positive, Nk cell-positive. Orthologous to human PTPRC (protein tyrosine phosphatase receptor type C).

## Immunogen Information

### Gene ID

19264

### Swiss Prot

P06800

### Immunogen

Recombinant fusion protein containing a sequence corresponding to amino acids 26-566 of mouse CD45 (NP\_001104786.2).

### Synonyms

loc; B220; Cd45; L-CA; Ly-5; T200; CD45R; Lyt-4

## Contact

☎ | 400-999-6126

✉ | [cn.market@abclonal.com.cn](mailto:cn.market@abclonal.com.cn)

🌐 | [www.abclonal.com.cn](http://www.abclonal.com.cn)

## Product Information

### Source

Rabbit

### Isotype

IgG

### Purification

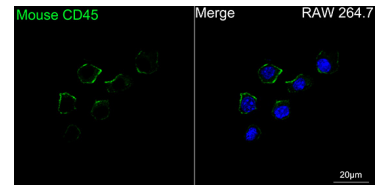
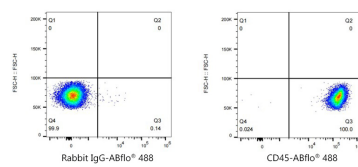
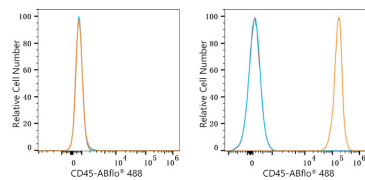
Affinity purification

### Storage

Store at 2-8°C. Avoid freeze.

Buffer: PBS with 0.03% proclin300,0.2% BSA,pH7.3.

## Validation Data



Flow cytometry: 1X10<sup>6</sup> C2C12 cells (negative control, left) and C57BL/6 mouse Splenocytes (right) were surface-stained with ABflo® 488 Rabbit anti-Mouse CD45 mAb (A23707, 5 µl/Test, orange line) or ABflo® 488 Rabbit IgG isotype control (A22069, 5 µl/Test, blue line). Non-fluorescently stained cells were used as blank control (red line).

Flow cytometry: 1X10<sup>6</sup> C57BL/6 mouse Splenocytes were surface-stained with ABflo® 488 Rabbit IgG isotype control (A22069, 5 µl/Test, left) or ABflo® 488 Rabbit anti-Mouse CD45 mAb (A23707, 5 µl/Test, right).

Confocal imaging of RAW 264.7 cells using ABflo® 488 Rabbit anti-Mouse CD45 mAb (A23707, dilution 1:200). DAPI was used for nuclear staining (Blue). Objective: 100x.