

ABflo® 594 Rabbit anti-Mouse CD45 mAb

Catalog No.: A23709

Basic Information

Observed MW**Calculated MW**

130KDa/140KDa/144KDa

Category

Primary antibody

Applications

IF/ICC,FC

Cross-Reactivity

Mouse

CloneNo number

ARC60962

Conjugate

ABflo® 594. Ex:588nm. Em:604nm.

Recommended Dilutions

IF/ICC 1:50 - 1:200**FC** 5 µl per 10⁶ cells in
100 µl volume

Background

Enables several functions, including heparan sulfate proteoglycan binding activity; heparin binding activity; and protein tyrosine phosphatase activity. Involved in several processes, including lymphocyte differentiation; positive regulation of macromolecule metabolic process; and regulation of signal transduction. Acts upstream of or within several processes, including lymphocyte differentiation; positive regulation of lymphocyte activation; and regulation of protein phosphorylation. Located in external side of plasma membrane; focal adhesion; and membrane raft. Is expressed in several structures, including 3rd branchial arch; alimentary system; cardiovascular system; hemolymphoid system; and placenta. Used to study systemic lupus erythematosus. Human ortholog(s) of this gene implicated in hepatitis C; multiple sclerosis; severe combined immunodeficiency; and severe combined immunodeficiency, autosomal recessive, T cell-negative, B cell-positive, Nk cell-positive. Orthologous to human PTPRC (protein tyrosine phosphatase receptor type C).

Immunogen Information

Gene ID

19264

Swiss Prot

P06800

Immunogen

Recombinant protein (or fragment). This information is considered to be commercially sensitive.

Synonyms

loc; B220; Cd45; L-CA; Ly-5; T200; CD45R; Lyt-4

Contact

 | 400-999-6126 | cn.market@abclonal.com.cn | www.abclonal.com.cn

Product Information

Source

Rabbit

Isotype

IgG

Purification

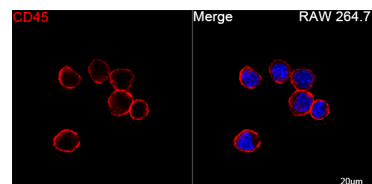
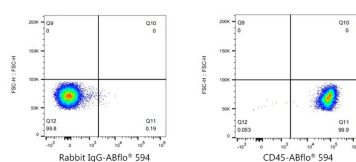
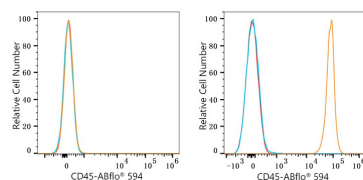
Affinity purification

Storage

Store at 2-8°C. Avoid freeze.

Buffer: PBS containing 0.2% BSA, preserved with proclin300 or sodium azide (as specified on the Certificate of Analysis), pH 7.3.

Validation Data



Flow cytometry: 1×10^6 C2C12 (negative control, left) and C57BL/6 mouse Splenocytes (right) were surface-stained with ABflo® 594 Rabbit anti-Mouse CD45 mAb (A23709, 5 μl/Test, orange line) or ABflo® 594 Rabbit IgG isotype control (A23821, 5 μl/Test, blue line). Non-fluorescently stained cells were used as blank control (red line).

Flow cytometry: 1×10^6 C57BL/6 mouse splenocytes were surface-stained with ABflo® 594 Rabbit IgG isotype control (5 μl/Test, left) or ABflo® 594 Rabbit anti-Mouse CD45 mAb (A23709, 5 μl/Test, right).

Confocal imaging of RAW 264.7 cells using ABflo® 594 Rabbit anti-Mouse CD45 mAb (A23709, dilution 1:50). Objective: 100x.