

# PE Rabbit anti-Human CD166/ALCAM mAb

Catalog No.: A23710

## Basic Information

### Observed MW

### Calculated MW

15kDa/33kDa/63kDa/65kDa

### Category

Primary antibody

### Applications

FC

### Cross-Reactivity

Human

### CloneNo number

ARC57933

### Conjugate

PE. Ex:565nm. Em:574nm.

## Recommended Dilutions

FC 5  $\mu$ l per  $10^6$  cells in  
100  $\mu$ l volume

## Background

This gene encodes activated leukocyte cell adhesion molecule (ALCAM), also known as CD166 (cluster of differentiation 166), which is a member of a subfamily of immunoglobulin receptors with five immunoglobulin-like domains (VVC2C2C2) in the extracellular domain. This protein binds to T-cell differentiation antigen CD6, and is implicated in the processes of cell adhesion and migration. Multiple alternatively spliced transcript variants encoding different isoforms have been found.

## Immunogen Information

### Gene ID

214

### Swiss Prot

Q13740

### Immunogen

Recombinant protein (or fragment). This information is considered to be commercially sensitive.

### Synonyms

MEMD; CD166

## Contact

☎ | 400-999-6126

✉ | [cn.market@abclonal.com.cn](mailto:cn.market@abclonal.com.cn)

🌐 | [www.abclonal.com.cn](http://www.abclonal.com.cn)

## Product Information

### Source

Rabbit

### Isotype

IgG

### Purification

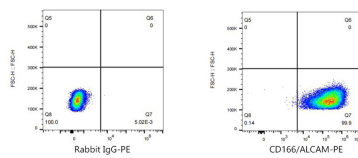
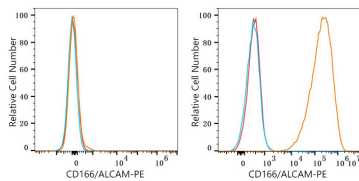
Affinity purification

### Storage

Store at 2-8°C. Avoid freeze.

Buffer: PBS containing 0.2% BSA, preserved with proclin300 or sodium azide (as specified on the Certificate of Analysis), pH 7.3.

## Validation Data



Flow cytometry:  $1 \times 10^6$  K562 cells (negative control, left) and SH-SY5Y (right) cells were surface-stained with PE Rabbit anti-Human CD166/ALCAM mAb (A23710, 5  $\mu$ l/Test, orange line) or PE Rabbit IgG isotype control (5  $\mu$ l/Test, blue line). Non-fluorescently stained cells were used as blank control (red line).

Flow cytometry:  $1 \times 10^6$  SH-SY5Y cells were surface-stained with PE Rabbit IgG isotype control (5  $\mu$ l/Test, left) or PE Rabbit anti-Human CD166/ALCAM mAb (A23710, 5  $\mu$ l/Test, right).