

# PE Rabbit anti-Human CD25 mAb

**Catalog No.: A23712**

## Basic Information

**Observed MW**

Refer to figures

**Calculated MW**

31kDa

**Category**

Primary antibody

**Applications**

FC

**Cross-Reactivity**

Human

**CloneNo number**

ARC58046

**Conjugate**

PE. Ex:565nm. Em:574nm.

## Recommended Dilutions

**FC** 5  $\mu$ l per  $10^6$  cells in  
100  $\mu$ l volume

## Background

The interleukin 2 (IL2) receptor alpha (IL2RA) and beta (IL2RB) chains, together with the common gamma chain (IL2RG), constitute the high-affinity IL2 receptor. Homodimeric alpha chains (IL2RA) result in low-affinity receptor, while homodimeric beta (IL2RB) chains produce a medium-affinity receptor. Normally an integral-membrane protein, soluble IL2RA has been isolated and determined to result from extracellular proteolysis. Alternately-spliced IL2RA mRNAs have been isolated, but the significance of each is presently unknown. Mutations in this gene are associated with interleukin 2 receptor alpha deficiency. Patients with severe Coronavirus Disease 2019 (COVID-19), the disease caused by the novel severe acute respiratory syndrome coronavirus 2 (SARS-CoV-2), have significantly elevated levels of IL2R in their plasma. Similarly, serum IL-2R levels are found to be elevated in patients with different types of carcinomas. Certain IL2RA and IL2RB gene polymorphisms have been associated with lung cancer risk.

## Immunogen Information

**Gene ID**

3559

**Swiss Prot**

P01589

**Immunogen**

Recombinant protein (or fragment). This information is considered to be commercially sensitive.

**Synonyms**

p55; CD25; IL2R; IMD41; TCGFR; IDDM10

## Contact

 | 400-999-6126 | [cn.market@abclonal.com.cn](mailto:cn.market@abclonal.com.cn) | [www.abclonal.com.cn](http://www.abclonal.com.cn)

## Product Information

**Source**

Rabbit

**Isotype**

IgG

**Purification**

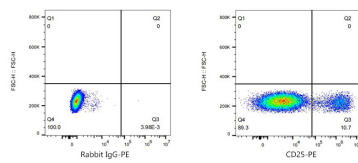
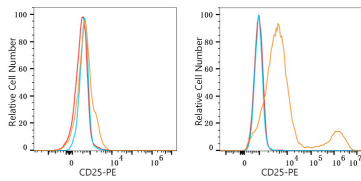
Affinity purification

**Storage**

Store at 2-8°C. Avoid freeze.

Buffer: PBS containing 0.2% BSA, preserved with proclin300 or sodium azide (as specified on the Certificate of Analysis), pH 7.3.

## Validation Data



Flow cytometry:  $1 \times 10^6$  293T cells (negative control, left) and 293T (Transfection, right) cells were surface-stained with PE Rabbit anti-Human CD25 mAb (A23712, 5  $\mu$ l/Test, orange line) or PE Rabbit IgG isotype control (5  $\mu$ l/Test, blue line). Non-fluorescently stained cells were used as blank control (red line).

Flow cytometry:  $1 \times 10^6$  293T (Transfection) cells were surface-stained with PE Rabbit IgG isotype control (5  $\mu$ l/Test, left) or PE Rabbit anti-Human CD25 mAb (A23712, 5  $\mu$ l/Test, right).